

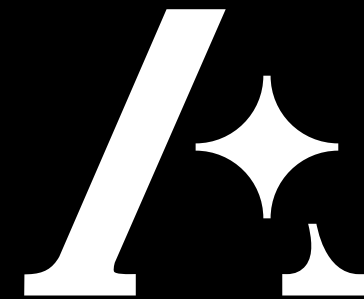
# BINGHATTI STARLIGHT



## A LEGACY OF ARCHITECTURAL ARTISTRY

IN THE HEART OF DUBAI'S VIBRANT REAL ESTATE LANDSCAPE, BINGHATTI STANDS AS A TESTAMENT TO ARCHITECTURAL INGENUITY AND UNWAVERING COMMITMENT TO EXCELLENCE. AS A DISTINGUISHED EMIRATI PROPERTY BRAND, BINGHATTI HAS CARVED A NICHE FOR ITSELF BY CREATING ICONIC LANDMARKS THAT REDEFINE THE SKYLINE. THE BRAND'S DIVERSE PORTFOLIO CATERS TO A WIDE SPECTRUM OF DISCERNING CLIENTELE, OFFERING PROJECTS THAT RANGE FROM ACCESSIBLE ELEGANCE TO ULTRA-HIGH-END LUXURY. BINGHATTI'S SIGNATURE DESIGN DNA, METICULOUSLY WOVEN INTO EACH DEVELOPMENT, SETS IT APART ON THE GLOBAL STAGE. WITH OVER 60 PROJECTS VALUED AT MORE THAN AED 30 BILLION, BINGHATTI IS A LEADING PRIVATELY HELD DEVELOPER IN THE UAE. THE COMPANY'S IMPRESSIVE TRACK RECORD, INCLUDING THE SUCCESSFUL DELIVERY OF 20,000 UNITS PRIOR TO 2024, UNDERSCORES ITS DEDICATION TO CRAFTING EXCEPTIONAL LIVING SPACES. THROUGH GROUNDBREAKING COLLABORATIONS WITH PRESTIGIOUS LUXURY BRANDS SUCH AS BUGATTI, MERCEDES-BENZ, AND JACOB & CO., BINGHATTI CONTINUES TO PUSH BOUNDARIES AND SET NEW BENCHMARKS IN THE WORLD OF BRANDED REAL ESTATE.

*Binghatti Starlight*

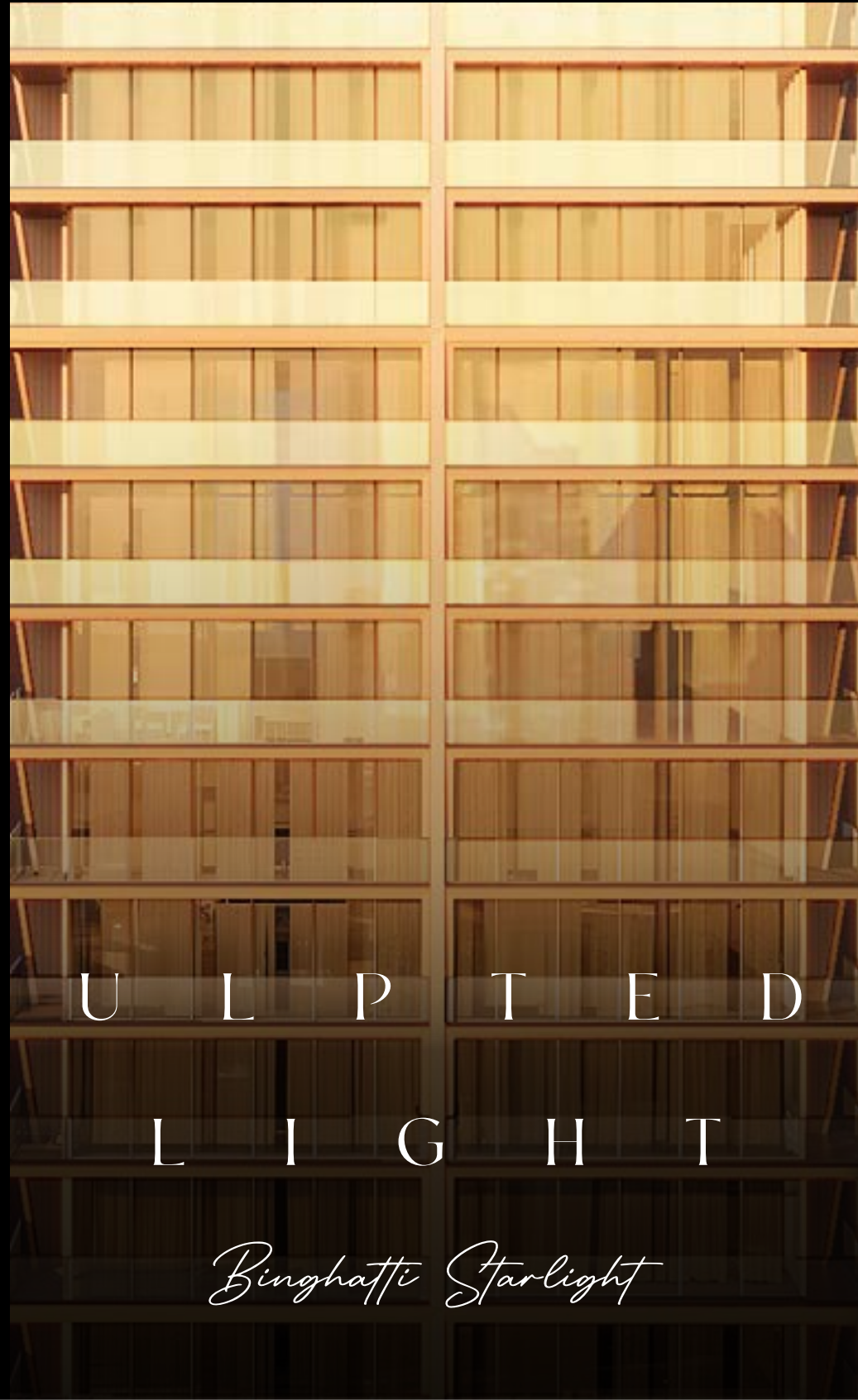


ABOVE THE WAKING HUM.  
A NEW CONSTELLATION IGNITES.  
STARLIGHT.

S I L E N T A B O V E T H E W A K I N G H U M  
T R A I L S O F L I G H T E M E R G E  
A S A R A D I A N T C O N S T E L L A T I O N  
I G N I T E S

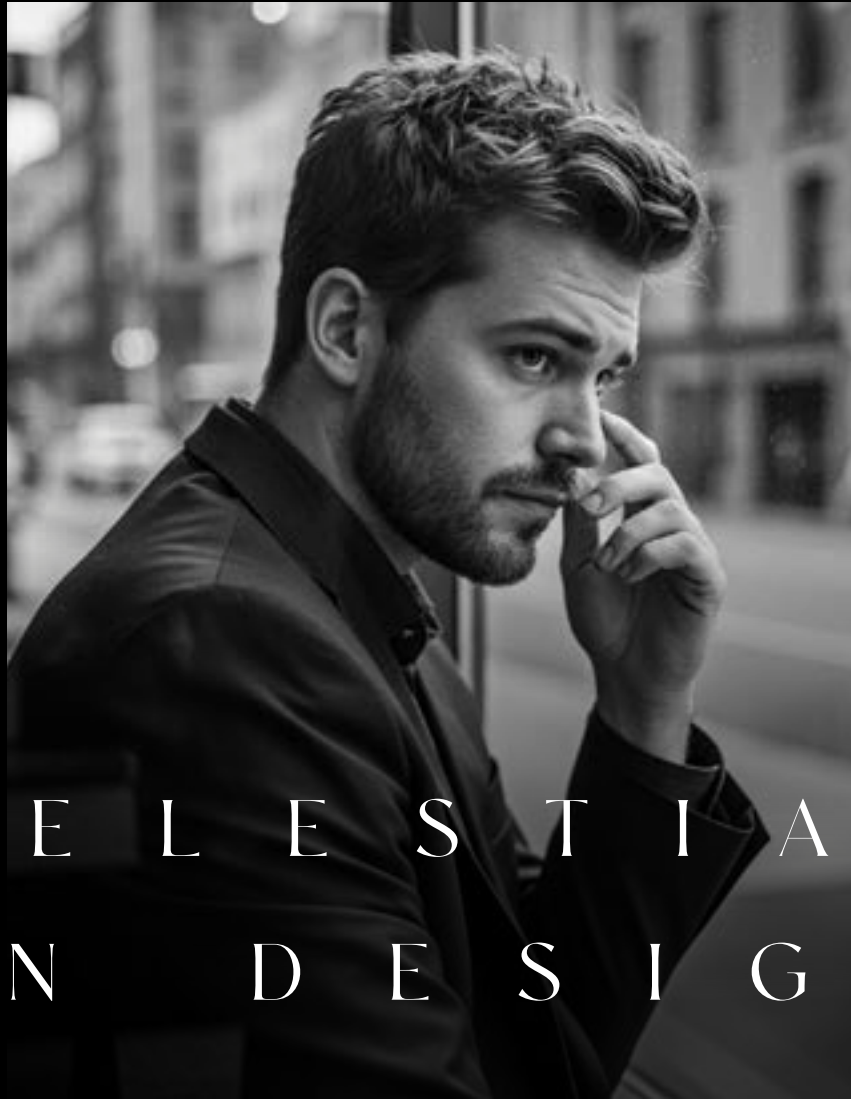
## MORE THAN A HOME, A NORTH STAR

STARLIGHT IS AN INVITATION TO THOSE WHO SEEK A LIFE LESS ORDINARY. IT'S A PLACE WHERE DREAMS TAKE FLIGHT, WHERE ASPIRATIONS ARE REALISED, AND WHERE EVERY BREATH IS AN OPPORTUNITY TO REACH FOR THE STARS. EMBRACE A LIFESTYLE THAT IS BOTH GROUNDED AND CELESTIAL, WHERE LUXURY AND TRANQUILITY CONVERGE.



S C U L P T E D B Y  
L I G H T

*Binghatti Starlight*

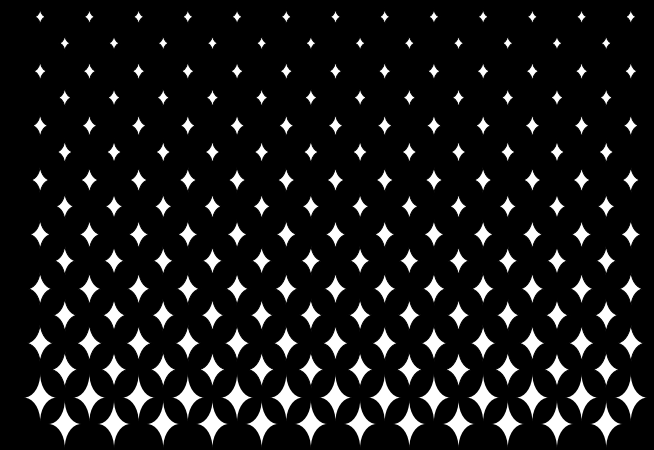


C E L E S T I A L  
I N D E S I G N

## A R C H I T E C T U R E I S

A CELESTIAL PLAY, A DANCE OF LIGHT AND SHADOW ACROSS ITS STARLIT FAÇADE. HEXAGONAL FACETS, LIKE STARS SCATTERED ACROSS THE NIGHT SKY, CAPTURE THE DUBAI SUN, CREATING A MESMERISING INTERPLAY OF REFLECTION AND SHIMMER. THIS DYNAMIC FAÇADE IS A TESTAMENT TO BINGHATTI'S COMMITMENT TO PUSHING THE BOUNDARIES OF DESIGN, CREATING A BUILDING THAT IS BOTH ICONIC AND BREATHTAKING.

*Binghatti Starlight*



# ABOUT STARLIGHT A TESTAMENT TO ARCHITECTURAL BRILLIANCE



EXPLORE THE VISION BEHIND STARLIGHT, A TESTAMENT TO BINGHATTI'S UNWAVERING COMMITMENT TO CREATING ICONIC LANDMARKS THAT REDEFINE THE DUBAI SKYLINE. DISCOVER HOW THE CELESTIAL THEME IS WOVEN INTO EVERY ASPECT OF THE DEVELOPMENT, FROM THE BUILDING'S ARCHITECTURE TO THE CURATED AMENITIES.



# PROJECT FACTS & KEY HIGHLIGHTS

## KEY FEATURES

STARLIGHT'S INTERIORS ARE PLACES OF REFINED ELEGANCE, A HAVEN OF TRANQUILITY WHERE YOU CAN ESCAPE THE HUSTLE AND BUSTLE OF CITY LIFE. SUBTLE HUES, RICH TEXTURES, AND CAREFULLY CURATED FURNISHINGS CREATE AN ATMOSPHERE OF UNDERSTATED LUXURY, ALLOWING YOUR PERSONAL STYLE TO SHINE.



PROPERTY TYPE  
**RESIDENTIAL + RETAIL**

PLOT AREA  
**4116.78 SQ. M 44313.00 SQFT**

BUILDING DESCRIPTION  
**3B + G + 3P + 20 RESIDENTIAL  
FLOORS + ROOF**

NUMBER OF UNITS	
<b>STUDIO APT.</b>	<b>294</b>
<b>1-BED APT.</b>	<b>155</b>
<b>2-BED APT.</b>	<b>61</b>

TOTAL UNITS	
<b>TOTAL RESIDENTIAL UNITS:</b>	<b>510</b>
<b>SHOP(GROUND FLOOR):</b>	<b>01</b>



WITHIN, A STELLAR RETREAT UNFOLDS.  
EACH RESIDENCE, A PRIVATE OBSERVATORY.  
THE CITY LIGHTS, A FIELD OF STARS STRETCHING OUTWARD.





STARLIGHT IS EQUALLY A CONSTELLATION OF INDIVIDUALS, FAMILIES, AND INVESTORS WHO SHARE A PASSION FOR CURATED LIVING. CONNECT WITH LIKE-MINDED NEIGHBOURS IN BEAUTIFULLY DESIGNED SHARED SPACES, BATHED IN NATURAL LIGHT. CREATE LASTING MEMORIES AND CAPTURE MEANINGFUL CONNECTIONS IN A COMMUNITY THAT SHINES AS BRIGHTLY AS THE STARS ABOVE.

A H A R M O N I O U S  
C O M M U N I T Y



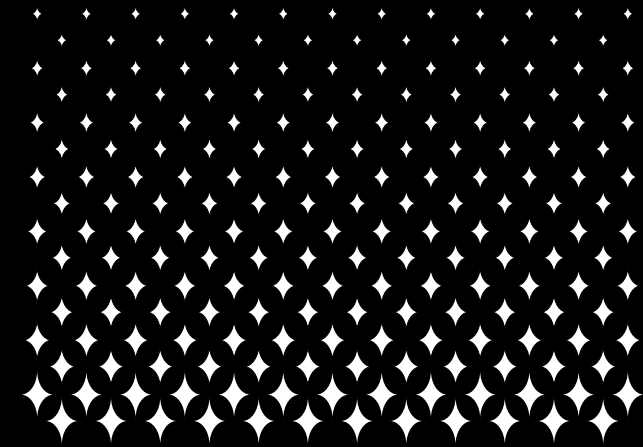


DESIGN  
DETAILS

## STEP INTO

A WORLD WHERE METICULOUS CRAFTSMANSHIP MEETS CELESTIAL INSPIRATION. EACH RESIDENCE IS A TESTAMENT TO BINGHATTI'S THAT FRAME BREATHTAKING VIEWS OF THE CITY SKYLINE, TRANSFORMING YOUR HOME INTO A PRIVATE OBSERVATORY.

*Binghatti Starlight*





WITHIN STARLIGHT'S WALLS, A SANCTUARY AWAITS. EACH RESIDENCE IS A HAVEN OF TRANQUILITY,  
METICULOUSLY DESIGNED TO PROVIDE AN ESCAPE FROM THE EVERYDAY. RELAX AND RECHARGE IN SPACES THAT  
INSPIRE SERENITY AND CONTEMPLATION, WHERE THE CITY'S HUM FADES IN THE DISTANCE.



*Binghatti Starlight*



# L I V E   A M O N G S T T H E   S T A R S

STARLIGHT IS AN INVITATION TO EMBRACE A LIFE LESS ORDINARY. IT'S A PLACE WHERE YOU CAN CONNECT WITH A VIBRANT COMMUNITY, ENJOY CURATED AMENITIES, AND CREATE LASTING MEMORIES IN A SETTING THAT IS BOTH CELESTIAL AND SERENE.

IN THE  
QUIET  
SHINING  
AND CAPTIVATING

*Binghatti Starlight*

STARLIGHT'S INTERIORS ARE PLACES OF REFINED ELEGANCE, A HAVEN OF TRANQUILITY WHERE YOU CAN  
ESCAPE THE HUSTLE AND BUSTLE OF CITY LIFE. SUBTLE HUES, RICH TEXTURES, AND CAREFULLY CURATED  
FURNISHINGS CREATE AN ATMOSPHERE OF UNDERSTATED LUXURY, ALLOWING YOUR PERSONAL STYLE TO SHINE.

A P E R S O N A L  
G A L A X Y , F R A M E D



STEP INTO RESIDENCES THAT REDEFINE MODERN LIVING. EXPANSIVE WINDOWS FRAME BREATHTAKING VIEWS OF THE DUBAI SKYLINE, TRANSFORMING YOUR HOME INTO A PRIVATE OBSERVATORY WHERE YOU CAN MARVEL AT THE CITY LIGHTS, YOUR PERSONAL GALAXY.



# DESIGN DETAILS STELLAR RETREAT UNFOLDS



STEP INTO A WORLD WHERE METICULOUS CRAFTSMANSHIP MEETS CELESTIAL INSPIRATION. EACH RESIDENCE IS A TESTAMENT TO BINGHATTI'S UNWAVERING PURSUIT OF EXCELLENCE, WITH EXPANSIVE WINDOWS THAT FRAME BREATHTAKING VIEWS OF THE CITY SKYLINE, TRANSFORMING YOUR HOME INTO A PRIVATE OBSERVATORY.



## SPACES DESIGNED FOR CONNECTION

STARLIGHT OFFERS A CURATED COLLECTION OF AMENITIES DESIGNED TO ENHANCE YOUR LIFESTYLE. TAKE A REFRESHING DIP IN THE POOL, UNWIND IN THE BEAUTIFULLY LANDSCAPED OUTDOOR SPACES, OR FIND YOUR RHYTHM IN THE STATE-OF-THE-ART FITNESS CENTRE. EVERY SPACE IS DESIGNED TO IGNITE CONNECTION, ENCOURAGE RELAXATION, AND LIFT YOUR EVERY DAY.

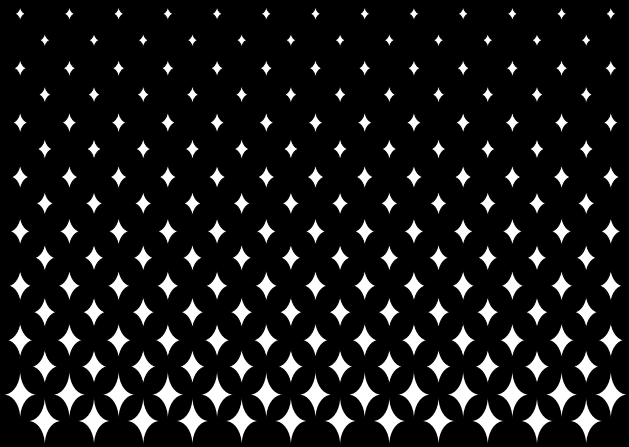




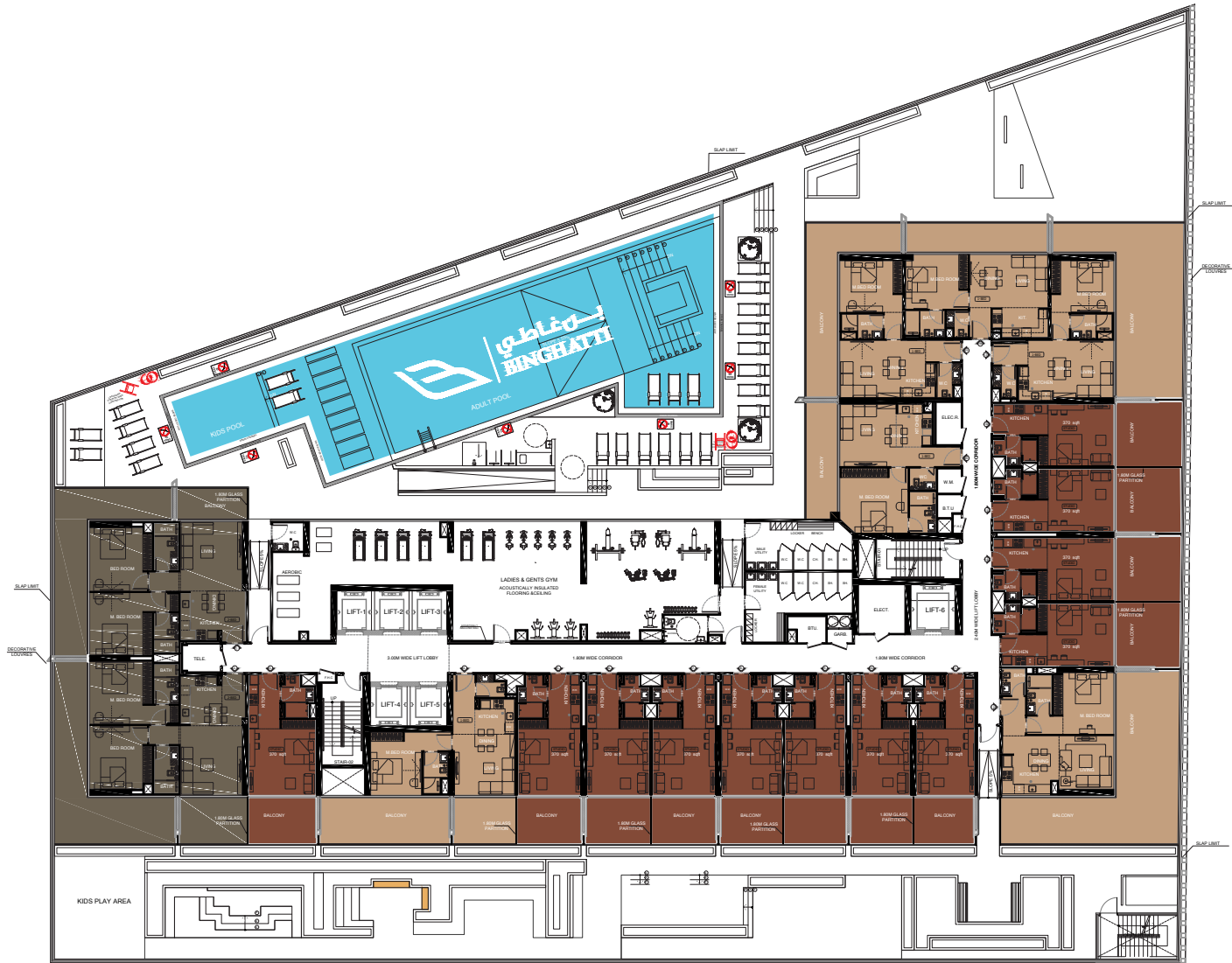


EXPLORE A VARIETY OF THOUGHTFULLY DESIGNED FLOOR PLANS,  
EACH CRAFTED TO MEET THE NEEDS OF DISCERNING INDIVIDUALS AND  
FAMILIES. FROM STUDIOS TO TWO-BEDROOM APARTMENTS, STARLIGHT  
OFFERS A SPACE FOR EVERYONE TO SHINE.

*Binghatti Starlight*



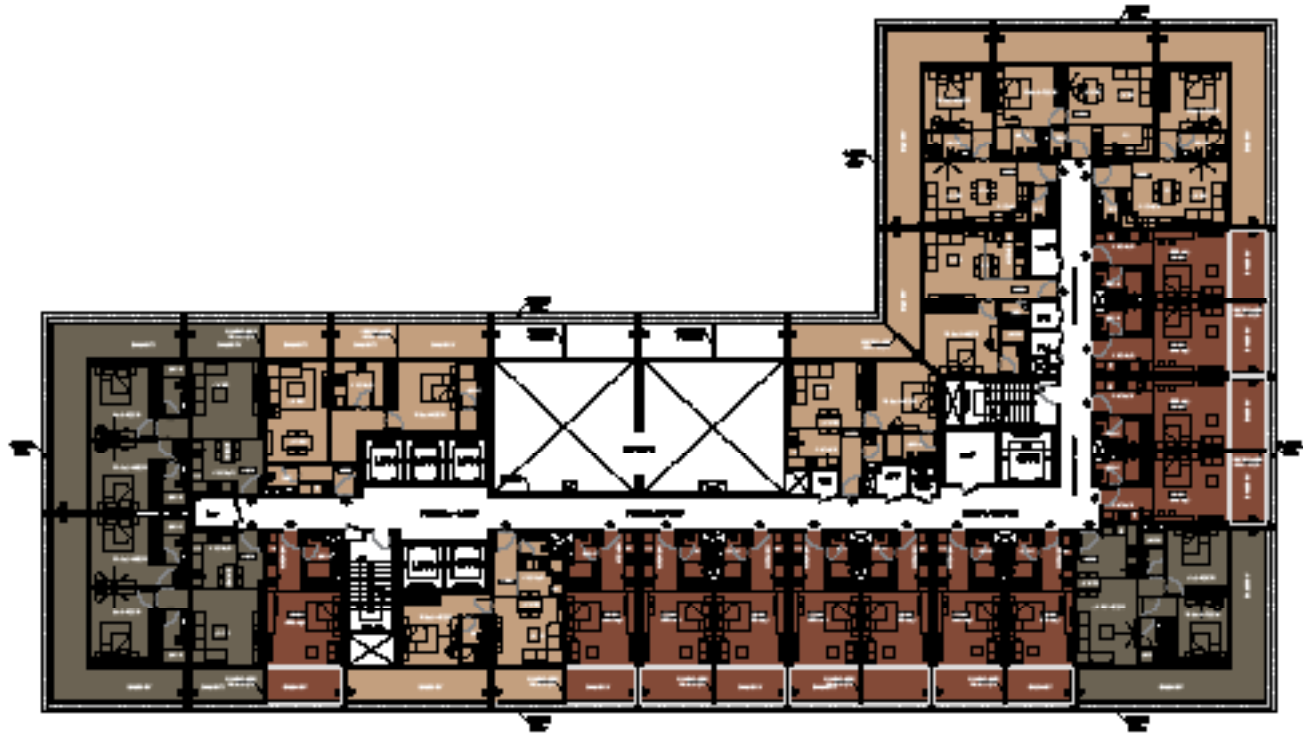
LEVEL 1



STUDIO 1 BEDROOM 2 BEDROOM

Disclaimer: 1. All room dimensions are measured to structural elements and exclude wall finishes and construction tolerances. 2. All dimensions have been provided by our consultant architects. 3. All materials, dimensions and drawings are approximate. Information is subject to change without notice. 4. Actual suite area may vary from the stated area. Drawings not to scale. The developer reserves the right to make revisions. 5. Calculation of suite area is measured as the area bounded by the centre line of demising or partition walls separating one unit from another unit, the exterior face of all exterior walls, and the exterior face of the corridor wall enclosing the adjoining unit. 6. Calculation of balcony area is measured as the area bounded by the centre line of demising or partition walls separating one unit from another unit, the outmost face of the enclosing guard and the external face of the adjoining balcony. 7. The units are measured at typical floor in the building. Columns may vary in size depending on the floor level. 8. For each unit type, unit sizes and details might be slightly different. Please refer to the sales and purchase agreement for the actual size of each specific unit.

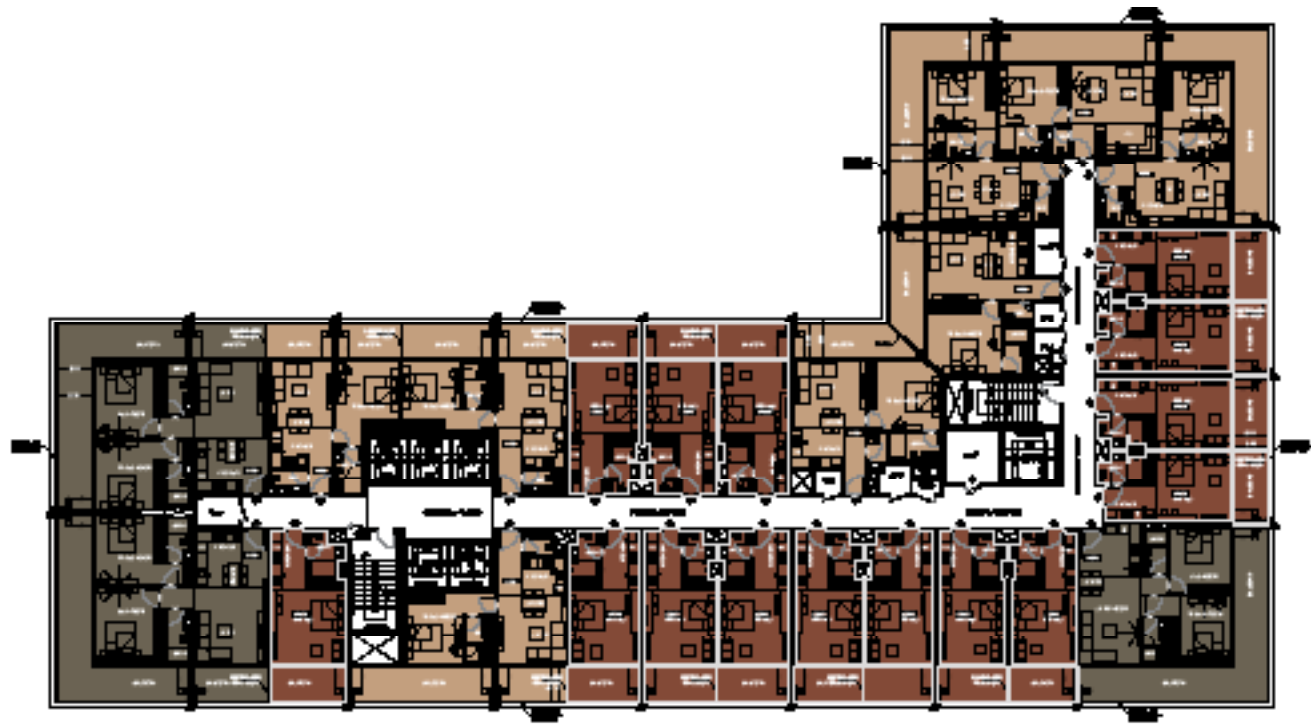
LEVEL 2



STUDIO 1 BEDROOM 2 BEDROOM

Disclaimer: 1. All room dimensions are measured to structural elements and exclude wall finishes and construction tolerances. 2. All dimensions have been provided by our consultant architects. 3. All materials, dimensions and drawings are approximate. Information is subject to change without notice. 4. Actual suite area may vary from the stated area. Drawings not to scale. The developer reserves the right to make revisions. 5. Calculation of suite area is measured as the area bounded by the centre line of demising or partition walls separating one unit from another unit, the exterior face of all exterior walls, and the exterior face of the corridor wall enclosing the adjoining unit. 6. Calculation of balcony area is measured as the area bounded by the centre line of demising or partition walls separating one unit from another unit, the outmost face of the enclosing guard and the external face of the adjoining balcony. 7. The units are measured at typical floor in the building. Columns may vary in size depending on the floor level. 8. For each unit type, unit sizes and details might be slightly different. Please refer to the sales and purchase agreement for the actual size of each specific unit.

RD TO 6TH & 8TH TO 10TH FLOOR



STUDIO 1 BEDROOM 2 BEDROOM

Disclaimer: 1. All room dimensions are measured to structural elements and exclude wall finishes and construction tolerances. 2. All dimensions have been provided by our consultant architects. 3. All materials, dimensions and drawings are approximate. Information is subject to change without notice. 4. Actual suite area may vary from the stated area. Drawings not to scale. The developer reserves the right to make revisions. 5. Calculation of suite area is measured as the area bounded by the centre line of demising or partition walls separating one unit from another unit, the exterior face of all exterior walls, and the exterior face of the corridor wall enclosing the adjoining unit. 6. Calculation of balcony area is measured as the area bounded by the centre line of demising or partition walls separating one unit from another unit, the outmost face of the enclosing guard and the external face of the adjoining balcony. 7. The units are measured at typical floor in the building. Columns may vary in size depending on the floor level. 8. For each unit type, unit sizes and details might be slightly different. Please refer to the sales and purchase agreement for the actual size of each specific unit.

LEVEL 7



STUDIO 1 BEDROOM 2 BEDROOM

Disclaimer: 1. All room dimensions are measured to structural elements and exclude wall finishes and construction tolerances. 2. All dimensions have been provided by our consultant architects. 3. All materials, dimensions and drawings are approximate. Information is subject to change without notice. 4. Actual suite area may vary from the stated area. Drawings not to scale. The developer reserves the right to make revisions. 5. Calculation of suite area is measured as the area bounded by the centre line of demising or partition walls separating one unit from another unit, the exterior face of all exterior walls, and the exterior face of the corridor wall enclosing the adjoining unit. 6. Calculation of balcony area is measured as the area bounded by the centre line of demising or partition walls separating one unit from another unit, the outmost face of the enclosing guard and the external face of the adjoining balcony. 7. The units are measured at typical floor in the building. Columns may vary in size depending on the floor level. 8. For each unit type, unit sizes and details might be slightly different. Please refer to the sales and purchase agreement for the actual size of each specific unit.

H TO 13TH & 15TH TO 19TH FLOOR PLAN



STUDIO 1 BEDROOM 2 BEDROOM

Disclaimer: 1. All room dimensions are measured to structural elements and exclude wall finishes and construction tolerances. 2. All dimensions have been provided by our consultant architects. 3. All materials, dimensions and drawings are approximate. Information is subject to change without notice. 4. Actual suite area may vary from the stated area. Drawings not to scale. The developer reserves the right to make revisions. 5. Calculation of suite area is measured as the area bounded by the centre line of demising or partition walls separating one unit from another unit, the exterior face of all exterior walls, and the exterior face of the corridor wall enclosing the adjoining unit. 6. Calculation of balcony area is measured as the area bounded by the centre line of demising or partition walls separating one unit from another unit, the outmost face of the enclosing guard and the external face of the adjoining balcony. 7. The units are measured at typical floor in the building. Columns may vary in size depending on the floor level. 8. For each unit type, unit sizes and details might be slightly different. Please refer to the sales and purchase agreement for the actual size of each specific unit.

LEVEL 14



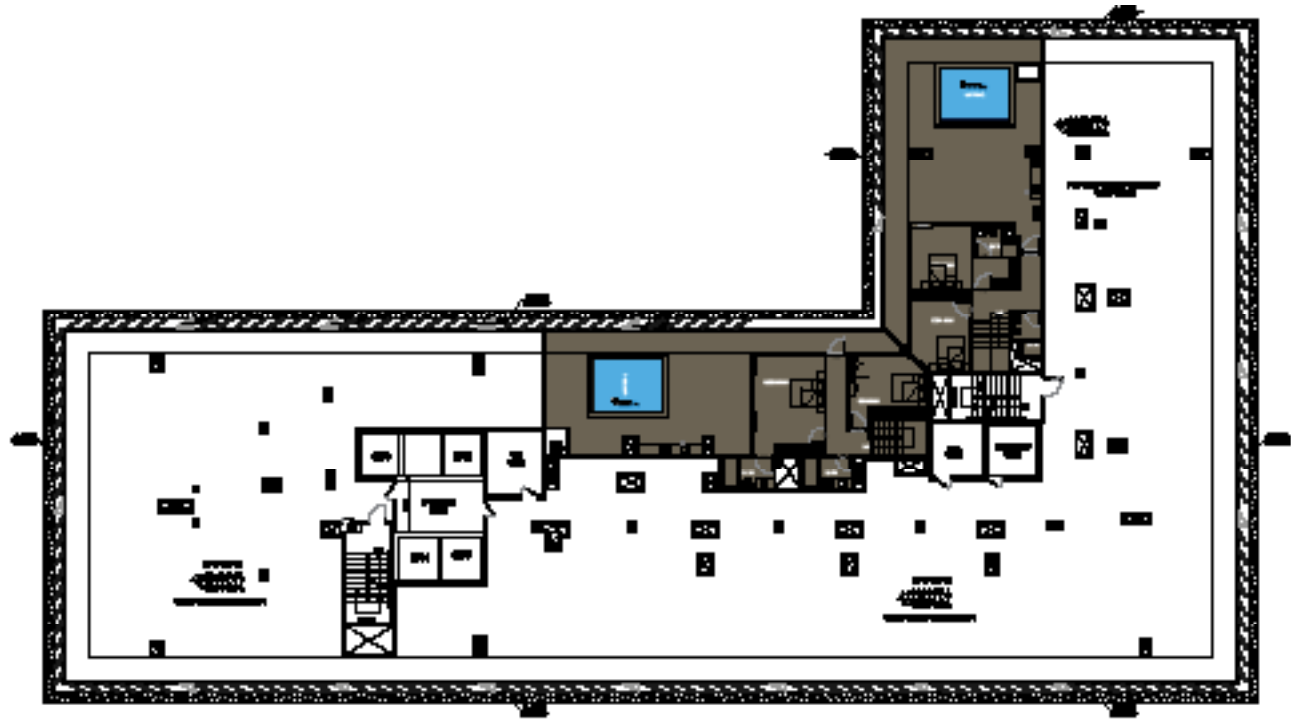
STUDIO 1 BEDROOM 2 BEDROOM

Disclaimer: 1. All room dimensions are measured to structural elements and exclude wall finishes and construction tolerances. 2. All dimensions have been provided by our consultant architects. 3. All materials, dimensions and drawings are approximate. Information is subject to change without notice. 4. Actual suite area may vary from the stated area. Drawings not to scale. The developer reserves the right to make revisions. 5. Calculation of suite area is measured as the area bounded by the centre line of demising or partition walls separating one unit from another unit, the exterior face of all exterior walls, and the exterior face of the corridor wall enclosing the adjoining unit. 6. Calculation of balcony area is measured as the area bounded by the centre line of demising or partition walls separating one unit from another unit, the outmost face of the enclosing guard and the external face of the adjoining balcony. 7. The units are measured at typical floor in the building. Columns may vary in size depending on the floor level. 8. For each unit type, unit sizes and details might be slightly different. Please refer to the sales and purchase agreement for the actual size of each specific unit.



STUDIO 1 BEDROOM 2 BEDROOM

Disclaimer: 1. All room dimensions are measured to structural elements and exclude wall finishes and construction tolerances. 2. All dimensions have been provided by our consultant architects. 3. All materials, dimensions and drawings are approximate. Information is subject to change without notice. 4. Actual suite area may vary from the stated area. Drawings not to scale. The developer reserves the right to make revisions. 5. Calculation of suite area is measured as the area bounded by the centre line of demising or partition walls separating one unit from another unit, the exterior face of all exterior walls, and the exterior face of the corridor wall enclosing the adjoining unit. 6. Calculation of balcony area is measured as the area bounded by the centre line of demising or partition walls separating one unit from another unit, the outmost face of the enclosing guard and the external face of the adjoining balcony. 7. The units are measured at typical floor in the building. Columns may vary in size depending on the floor level. 8. For each unit type, unit sizes and details might be slightly different. Please refer to the sales and purchase agreement for the actual size of each specific unit.

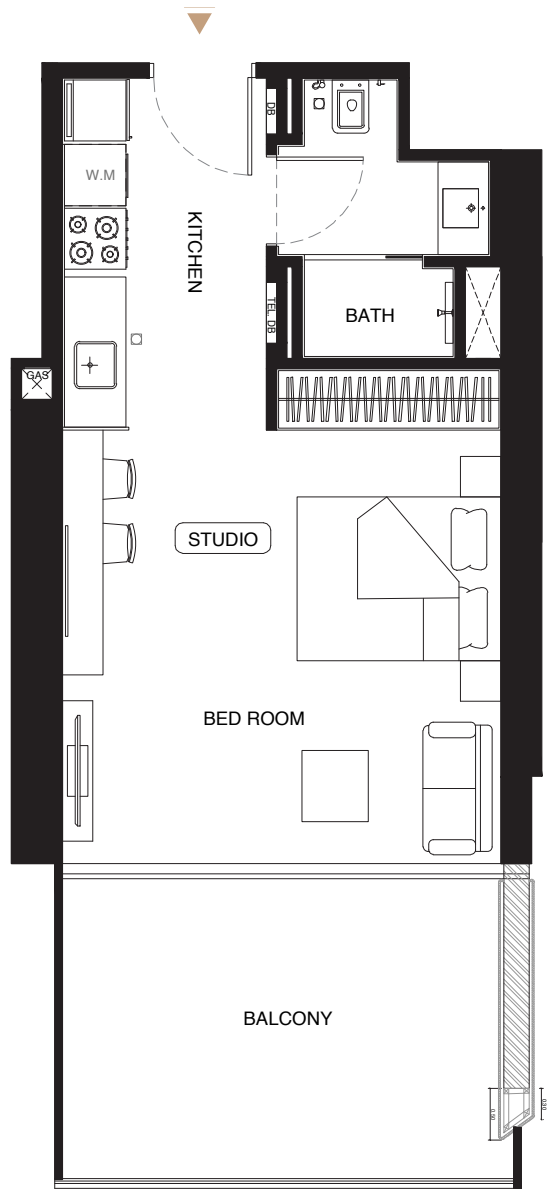


STUDIO 1 BEDROOM 2 BEDROOM

Disclaimer: 1. All room dimensions are measured to structural elements and exclude wall finishes and construction tolerances. 2. All dimensions have been provided by our consultant architects. 3. All materials, dimensions and drawings are approximate. Information is subject to change without notice. 4. Actual suite area may vary from the stated area. Drawings not to scale. The developer reserves the right to make revisions. 5. Calculation of suite area is measured as the area bounded by the centre line of demising or partition walls separating one unit from another unit, the exterior face of all exterior walls, and the exterior face of the corridor wall enclosing the adjoining unit. 6. Calculation of balcony area is measured as the area bounded by the centre line of demising or partition walls separating one unit from another unit, the outmost face of the enclosing guard and the external face of the adjoining balcony. 7. The units are measured at typical floor in the building. Columns may vary in size depending on the floor level. 8. For each unit type, unit sizes and details might be slightly different. Please refer to the sales and purchase agreement for the actual size of each specific unit.

# STUDIOS

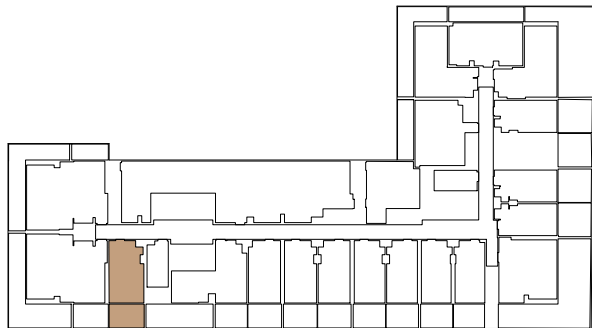
## STUDIO TYPE 01



AREA	SQ.M.	SQ.FT.
SUITE AREA	35.22 m²	379.10 ft²
BALCONY AREA	13.42 m²	144.45 ft²
TOTAL UNIT AREA	48.64 m²	523.56 ft²

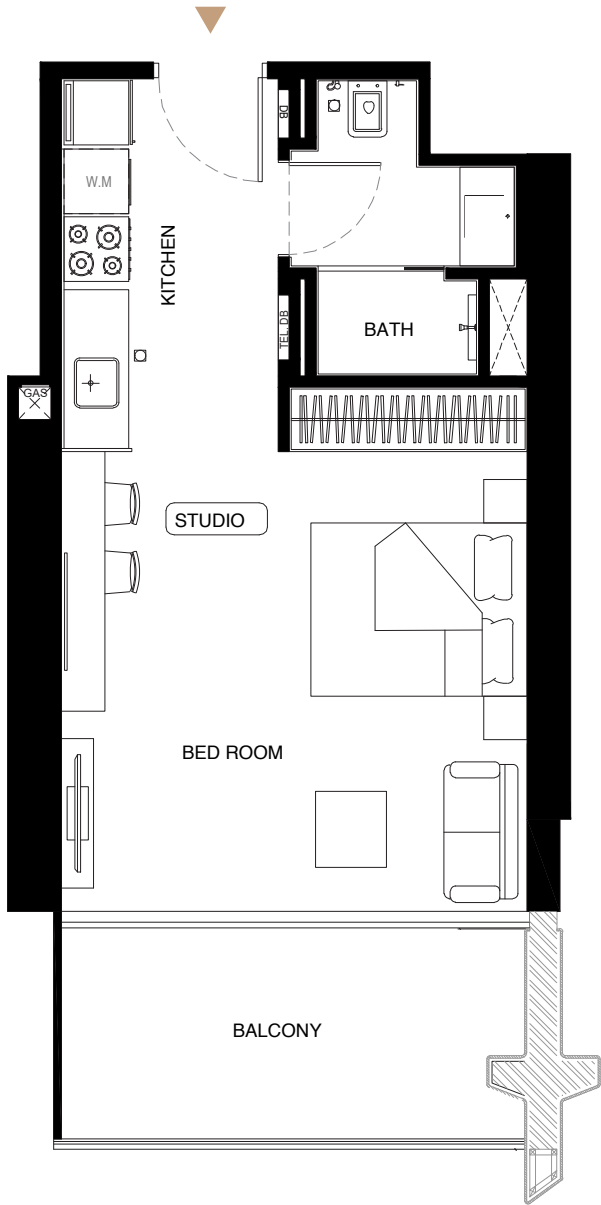
### FLAT DESIGN COMPONENTS

BATH	4 m²
STUDIO	20 m²
KITCHEN	7 m²



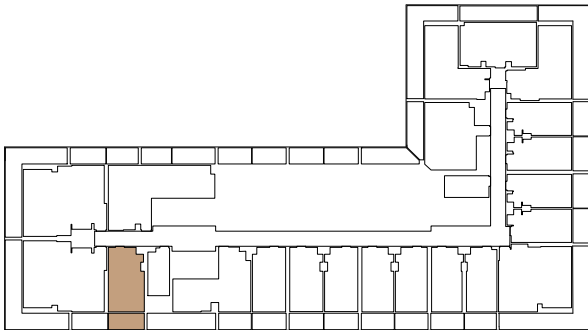
Disclaimer: 1. All room dimensions are measured to structural elements and exclude wall finishes and construction tolerances. 2. All dimensions have been provided by our consultant architects. 3. All materials, dimensions and drawings are approximate. Information is subject to change without notice. 4. Actual suite area may vary from the stated area. Drawings not to scale. This developer reserves the right to make variations. 5. Calculation of suite area is measured as the area bounded by the centre line of demising or partition walls separating one unit from another unit, the exterior face of all exterior walls, and the exterior face of the corridor wall enclosing the adjoining unit. 6. Calculation of balcony area is measured as the area bounded by the centre line of demising or partition walls separating one unit from another unit, the outmost face of the enclosing guard and the external face of the adjoining balcony. 7. The units are measured at typical floor in the building. Columns may vary in size depending on the floor level. 8. For each unit type, unit sizes and details might be slightly different. Please refer to the sales and purchase agreement for the actual size of each specific unit.

STUDIO TYPE 02



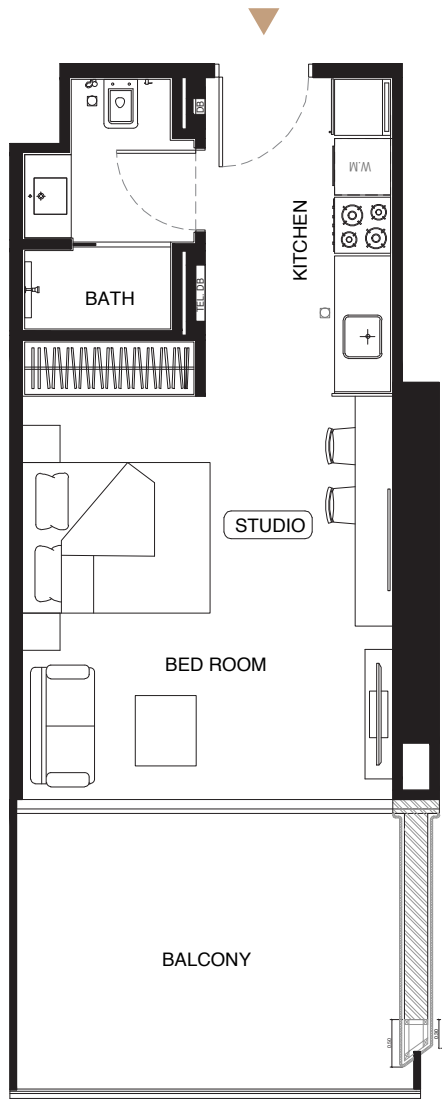
AREA	SQ.M.	SQ.FT.
SUITE AREA	35.21 m²	379.00 ft²
BALCONY AREA	9.09 m²	97.84 ft²
TOTAL UNIT AREA	44.30 m²	476.84 ft²

FLAT DESIGN COMPONENTS		
BATH	4	m²
STUDIO	20	m²
KITCHEN	7	m²



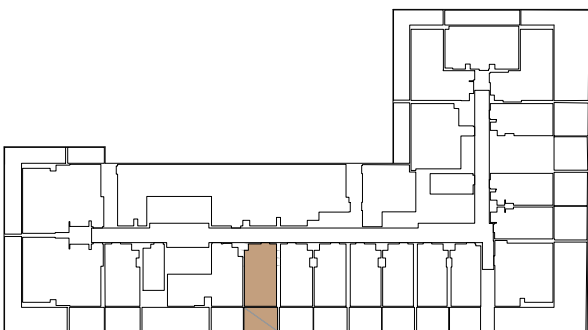
Disclaimer: 1. All room dimensions are measured to structural elements and exclude wall finishes and construction tolerances. 2. All dimensions have been provided by our consultant architects. 3. All materials, dimensions and drawings are approximate. Information is subject to change without notice. 4. Actual suite area may vary from the stated area. Drawings not to scale. The developer reserves the right to make revisions. 5. Calculation of suite area is measured as the area bounded by the centre line of demising or partition walls separating one unit from another unit, the exterior face of all exterior walls, and the exterior face of the corridor wall enclosing the adjoining unit. 6. Calculation of balcony area is measured as the area bounded by the centre line of demising or partition walls separating one unit from another unit, the outmost face of the enclosing guard and the external face of the adjoining balcony. 7. The units are measured at typical floor in the building. Columns may varyt in size depending on the floor level. 8. For each unit type, unit sizes and details might be slightly different. Please refer to the sales and purchase agreement for the actual size of each specific unit.

STUDIO TYPE 03



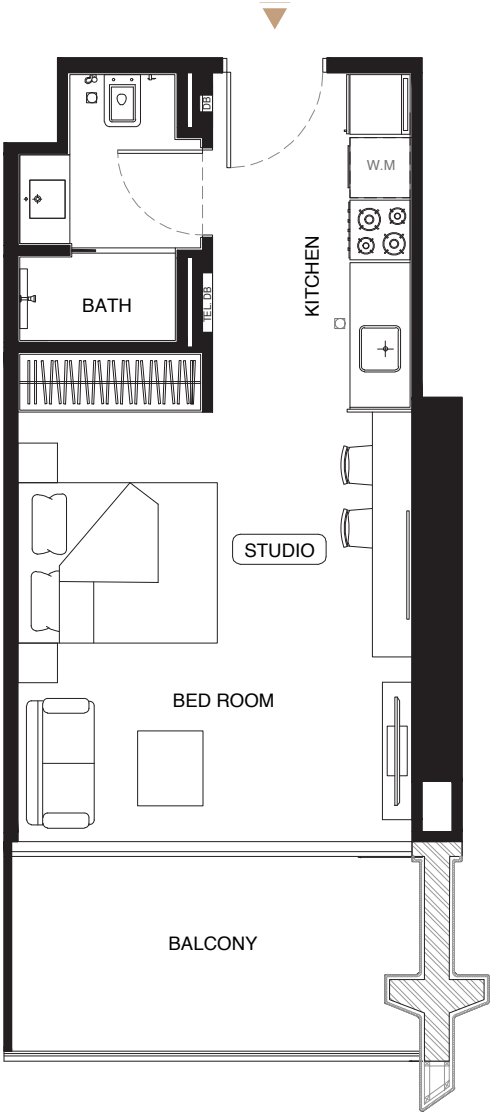
AREA	SQ.M.	SQ.FT.
SUITE AREA	33.40 m²	359.51 ft²
BALCONY AREA	12.87 m²	138.53 ft²
TOTAL UNIT AREA	46.27 m²	498.05 ft²

FLAT DESIGN COMPONENTS		
BATH	4	m²
STUDIO	18	m²
KITCHEN	7	m²



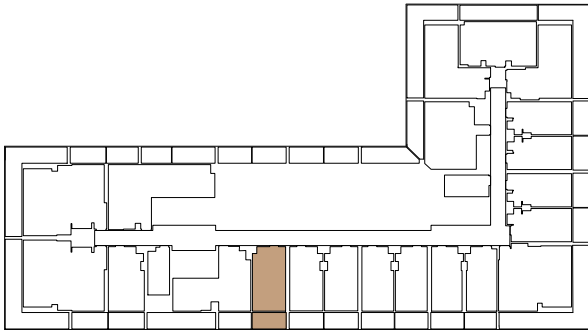
Disclaimer: 1. All room dimensions are measured to structural elements and exclude wall finishes and construction tolerances. 2. All dimensions have been provided by our consultant architects. 3. All materials, dimensions and drawings are approximate. Information is subject to change without notice. 4. Actual suite area may vary from the stated area. Drawings not to scale. The developer reserves the right to make revisions. 5. Calculation of suite area is measured as the area bounded by the centre line of demising or partition walls separating one unit from another unit, the exterior face of all exterior walls, and the exterior face of the corridor wall enclosing the adjoining unit. 6. Calculation of balcony area is measured as the area bounded by the centre line of demising or partition walls separating one unit from another unit, the outmost face of the enclosing guard and the external face of the adjoining balcony. 7. The units are measured at typical floor in the building. Columns may varyt in size depending on the floor level. 8. For each unit type, unit sizes and details might be slightly different. Please refer to the sales and purchase agreement for the actual size of each specific unit.

STUDIO TYPE 04



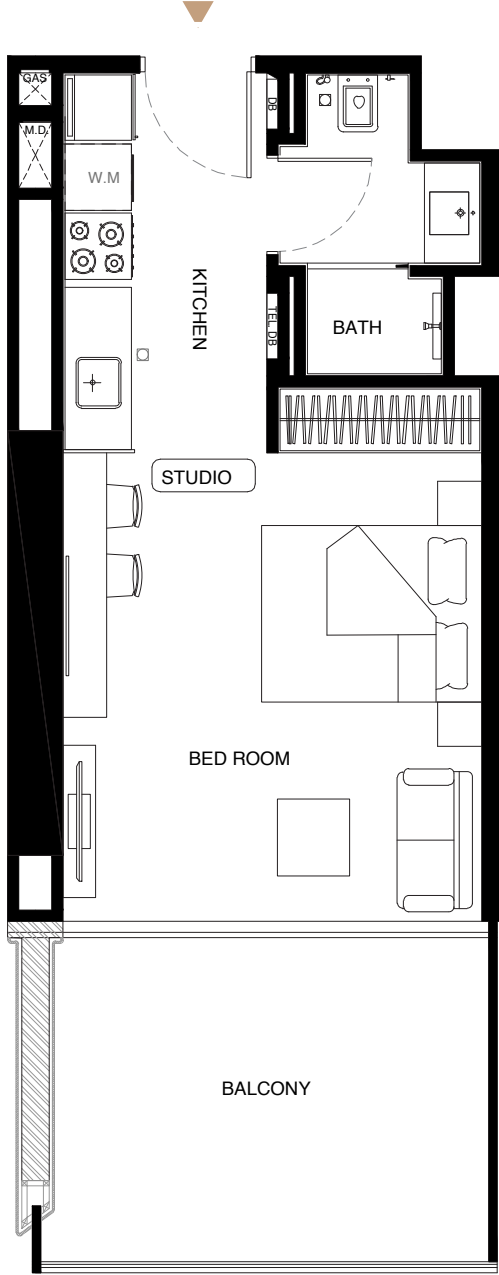
AREA	SQ.M.	SQ.FT.
SUITE AREA	33.40 m²	359.51 ft²
BALCONY AREA	8.61 m²	92.68 ft²
TOTAL UNIT AREA	42.01 m²	452.19 ft²

FLAT DESIGN COMPONENTS		
BATH	4	m²
STUDIO	18	m²
KITCHEN	7	m²



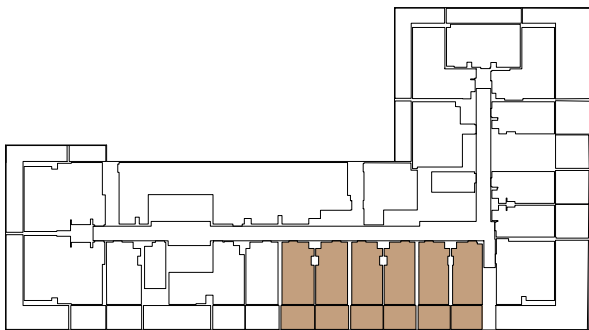
Disclaimer: 1. All room dimensions are measured to structural elements and exclude wall finishes and construction tolerances. 2. All dimensions have been provided by our consultant architects. 3. All materials, dimensions and drawings are approximate. Information is subject to change without notice. 4. Actual suite area may vary from the stated area. Drawings not to scale. This developer reserves the right to make variations. 5. Calculation of suite area is measured as the area bounded by the centre line of demising or partition walls separating one unit from another unit, the exterior face of all exterior walls, and the exterior face of the corridor wall enclosing the adjoining unit. 6. Calculation of balcony area is measured as the area bounded by the centre line of demising or partition walls separating one unit from another unit, the outmost face of the enclosing guard and the external face of the adjoining balcony. 7. The units are measured at typical floor in the building. Columns may vary in size depending on the floor level. 8. For each unit type, unit sizes and details might be slightly different. Please refer to the sales and purchase agreement for the actual size of each specific unit.

STUDIO TYPE 05



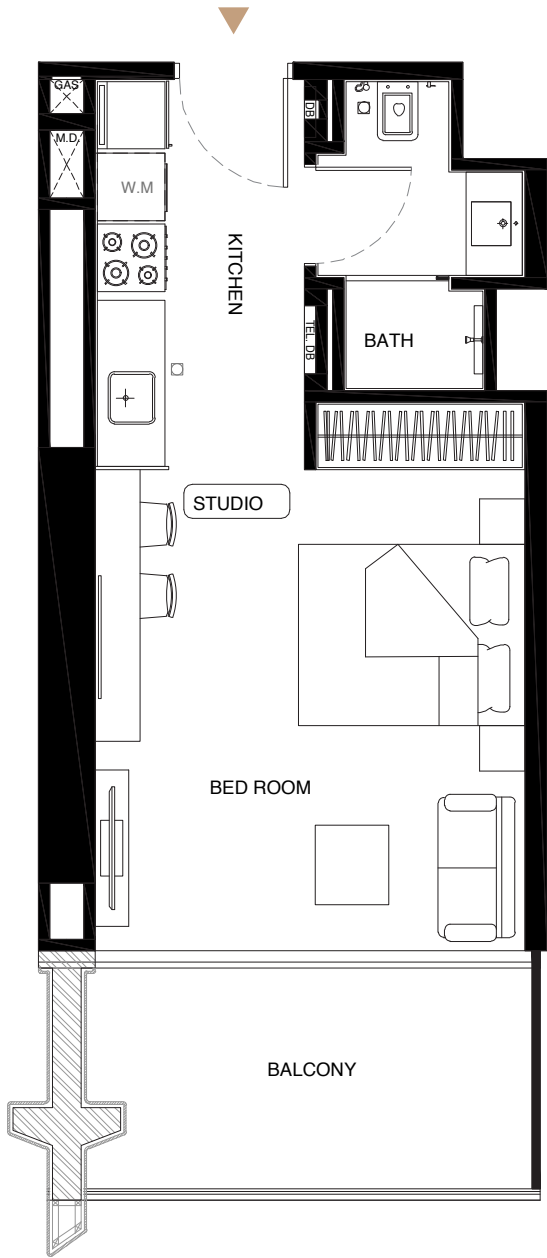
AREA	SQ.M.	SQ.FT.
SUITE AREA	31.73 m²	341.54 ft²
BALCONY AREA	12.41 m²	133.58 ft²
TOTAL UNIT AREA	44.14 m²	475.12 ft²

FLAT DESIGN COMPONENTS		
BATH	4	m²
STUDIO	17	m²
KITCHEN	7	m²



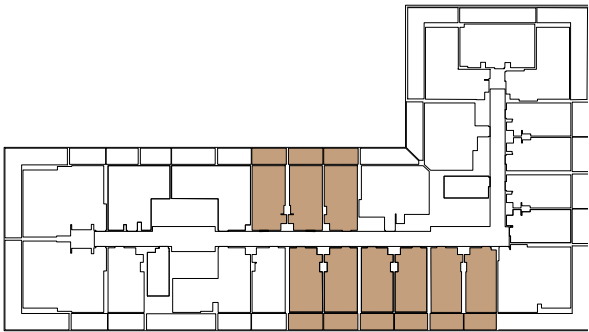
Disclaimer: 1. All room dimensions are measured to structural elements and exclude wall finishes and construction tolerances. 2. All dimensions have been provided by our consultant architects. 3. All materials, dimensions and drawings are approximate. Information is subject to change without notice. 4. Actual suite area may vary from the stated area. Drawings not to scale. This developer reserves the right to make variations. 5. Calculation of suite area is measured as the area bounded by the centre line of demising or partition walls separating one unit from another unit, the exterior face of all exterior walls, and the exterior face of the corridor wall enclosing the adjoining unit. 6. Calculation of balcony area is measured as the area bounded by the centre line of demising or partition walls separating one unit from another unit, the outmost face of the enclosing guard and the external face of the adjoining balcony. 7. The units are measured at typical floor in the building. Columns may vary in size depending on the floor level. 8. For each unit type, unit sizes and details might be slightly different. Please refer to the sales and purchase agreement for the actual size of each specific unit.

STUDIO TYPE 06



AREA	SQ.M.		SQ.FT.	
SUITE AREA	30.57	m²	329.05	ft²
BALCONY AREA	8.00	m²	86.11	ft²
TOTAL UNIT AREA	38.57	m²	415.16	ft²

FLAT DESIGN COMPONENTS			
BATH		4	m²
STUDIO		17	m²
KITCHEN		7	m²



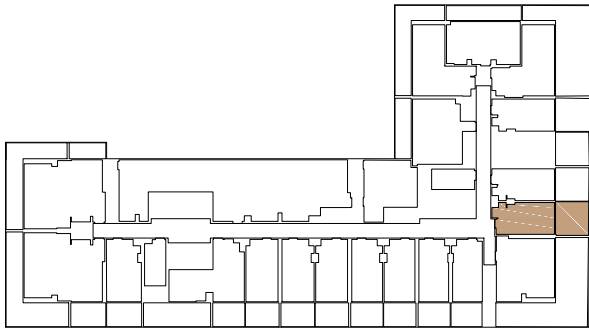
Disclaimer: 1. All room dimensions are measured to structural elements and exclude wall finishes and construction tolerances. 2. All dimensions have been provided by our consultant architects. 3. All materials, dimensions and drawings are approximate. Information is subject to change without notice. 4. Actual suite area may vary from the stated area. Drawings not to scale. The developer reserves the right to make revisions. 5. Calculation of suite area is measured as the area bounded by the centre line of demising or partition walls separating one unit from another unit, the exterior face of all exterior walls, and the exterior face of the corridor wall enclosing the adjoining unit. 6. Calculation of balcony area is measured as the area bounded by the centre line of demising or partition walls separating one unit from another unit, the outmost face of the enclosing guard and the external face of the adjoining balcony. 7. The units are measured at typical floor in the building. Columns may varyt in size depending on the floor level. 8. For each unit type, unit sizes and details might be slightly different. Please refer to the sales and purchase agreement for the actual size of each specific unit.

STUDIO TYPE 07



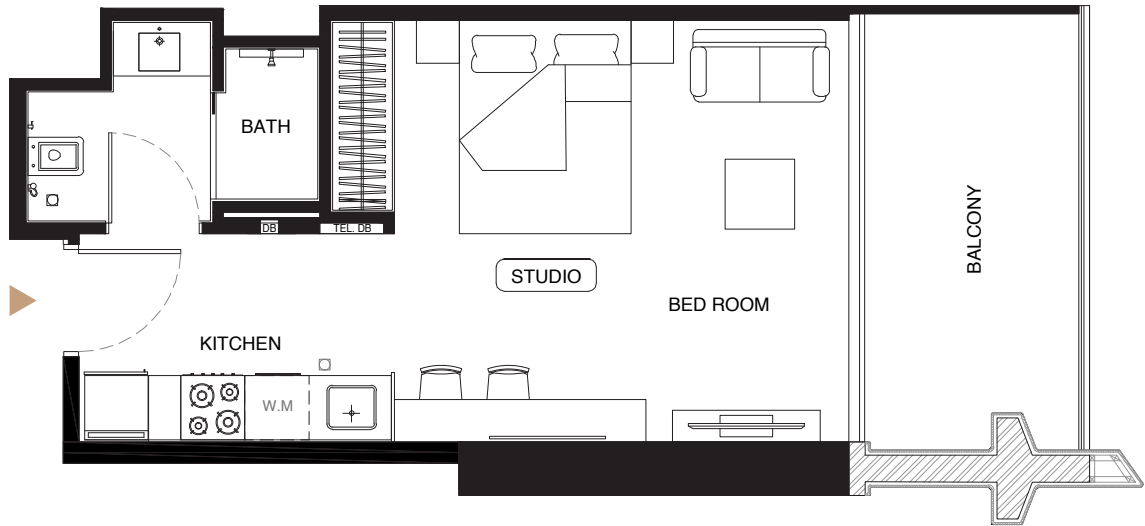
AREA	SQ.M.		SQ.FT.	
SUITE AREA	31.46	m²	338.63	ft²
BALCONY AREA	17.95	m²	193.21	ft²
TOTAL UNIT AREA	49.41	m²	531.84	ft²

FLAT DESIGN COMPONENTS			
BATH		4	m²
STUDIO		18	m²
KITCHEN		6	m²



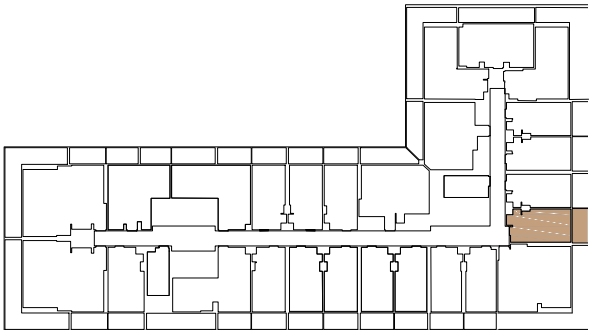
Disclaimer: 1. All room dimensions are measured to structural elements and exclude wall finishes and construction tolerances. 2. All dimensions have been provided by our consultant architects. 3. All materials, dimensions and drawings are approximate. Information is subject to change without notice. 4. Actual suite area may vary from the stated area. Drawings not to scale. The developer reserves the right to make revisions. 5. Calculation of suite area is measured as the area bounded by the centre line of demising or partition walls separating one unit from another unit, the exterior face of all exterior walls, and the exterior face of the corridor wall enclosing the adjoining unit. 6. Calculation of balcony area is measured as the area bounded by the centre line of demising or partition walls separating one unit from another unit, the outmost face of the enclosing guard and the external face of the adjoining balcony. 7. The units are measured at typical floor in the building. Columns may varyt in size depending on the floor level. 8. For each unit type, unit sizes and details might be slightly different. Please refer to the sales and purchase agreement for the actual size of each specific unit.

STUDIO TYPE 08



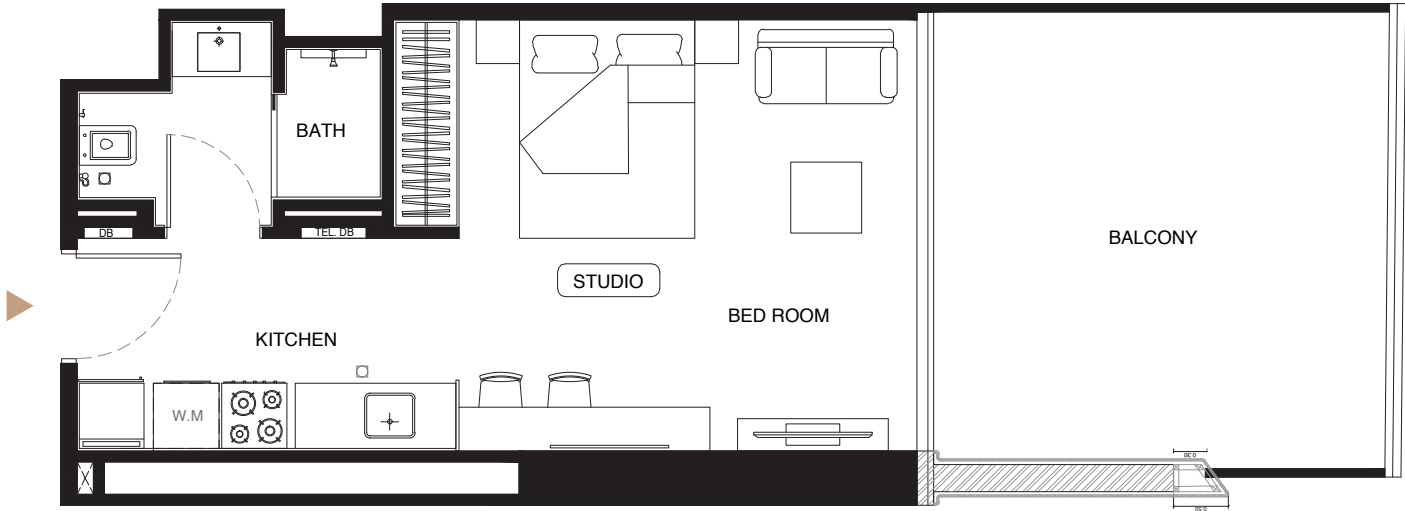
AREA	SQ.M.		SQ.FT.	
SUITE AREA	31.48	m²	338.85	ft²
BALCONY AREA	8.82	m²	94.94	ft²
TOTAL UNIT AREA	40.30	m²	433.79	ft²

FLAT DESIGN COMPONENTS			
BATH		4	m²
STUDIO		18	m²
KITCHEN		6	m²



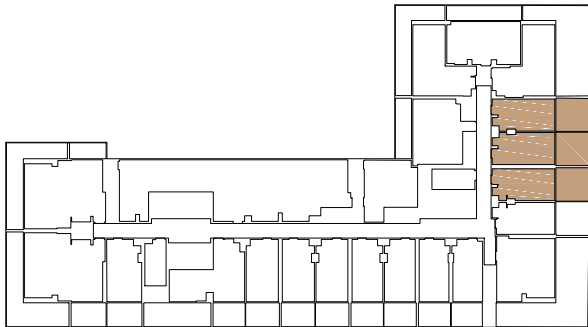
Disclaimer: 1. All room dimensions are measured to structural elements and exclude wall finishes and construction tolerances. 2. All dimensions have been provided by our consultant architects. 3. All materials, dimensions and drawings are approximate. Information is subject to change without notice. 4. Actual suite area may vary from the stated area. Drawings not to scale. The developer reserves the right to make revisions. 5. Calculation of suite area is measured as the area bounded by the centre line of demising or partition walls separating one unit from another unit, the exterior face of all exterior walls, and the exterior face of the corridor wall enclosing the adjoining unit. 6. Calculation of balcony area is measured as the area bounded by the centre line of demising or partition walls separating one unit from another unit, the outmost face of the enclosing guard and the external face of the adjoining balcony. 7. The units are measured at typical floor in the building. Columns may varyt in size depending on the floor level. 8. For each unit type, unit sizes and details might be slightly different. Please refer to the sales and purchase agreement for the actual size of each specific unit.

STUDIO TYPE 09

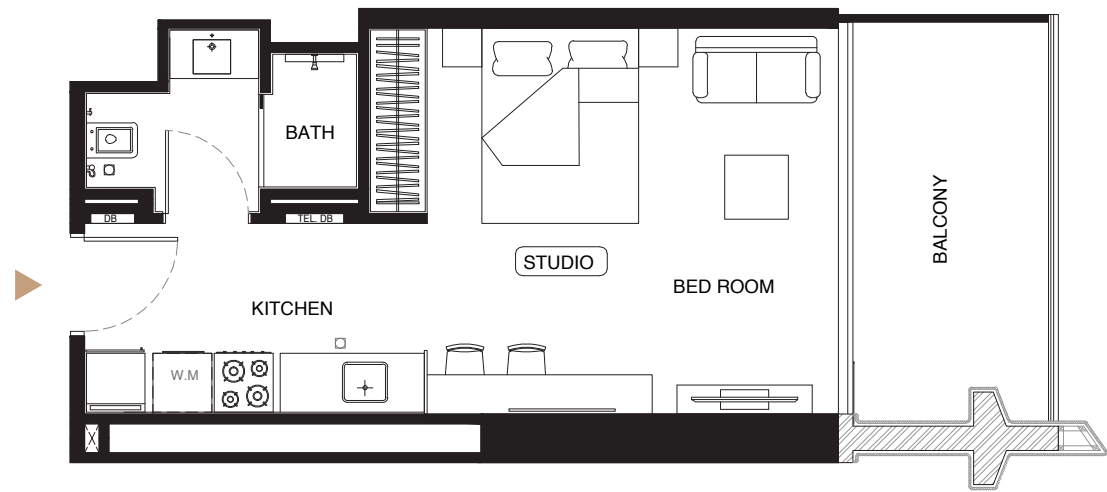


AREA	SQ.M.		SQ.FT.	
SUITE AREA	33.00	m²	355.21	ft²
BALCONY AREA	18.27	m²	196.66	ft²
TOTAL UNIT AREA	51.27	m²	551.87	ft²

FLAT DESIGN COMPONENTS			
BATH		4	m²
STUDIO		18	m²
KITCHEN		7	m²

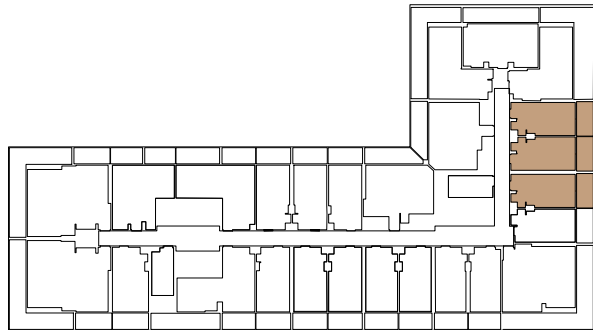


Disclaimer: 1. All room dimensions are measured to structural elements and exclude wall finishes and construction tolerances. 2. All dimensions have been provided by our consultant architects. 3. All materials, dimensions and drawings are approximate. Information is subject to change without notice. 4. Actual suite area may vary from the stated area. Drawings not to scale. The developer reserves the right to make revisions. 5. Calculation of suite area is measured as the area bounded by the centre line of demising or partition walls separating one unit from another unit, the exterior face of all exterior walls, and the exterior face of the corridor wall enclosing the adjoining unit. 6. Calculation of balcony area is measured as the area bounded by the centre line of demising or partition walls separating one unit from another unit, the outmost face of the enclosing guard and the external face of the adjoining balcony. 7. The units are measured at typical floor in the building. Columns may varyt in size depending on the floor level. 8. For each unit type, unit sizes and details might be slightly different. Please refer to the sales and purchase agreement for the actual size of each specific unit.



AREA	SQ.M.		SQ.FT.	
SUITE AREA	33.00	m <sup>2</sup>	355.21	ft <sup>2</sup>
BALCONY AREA	8.82	m <sup>2</sup>	94.94	ft <sup>2</sup>
TOTAL UNIT AREA	41.82	m <sup>2</sup>	450.15	ft <sup>2</sup>

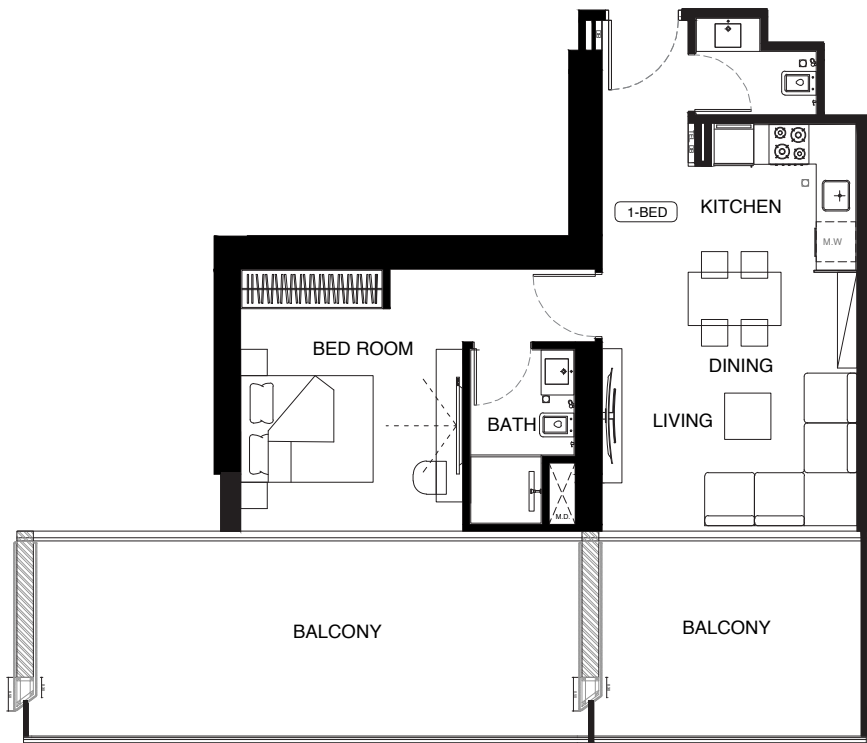
FLAT DESIGN COMPONENTS			
BATH	4	m <sup>2</sup>	
STUDIO	18	m <sup>2</sup>	
KITCHEN	7	m <sup>2</sup>	



Disclaimer: 1. All room dimensions are measured to structural elements and exclude wall finishes and construction tolerances. 2. All dimensions have been provided by our consultant architects. 3. All materials, dimensions and drawings are approximate. Information is subject to change without notice. 4. Actual suite area may vary from the stated area. Drawings not to scale. The developer reserves the right to make revisions. 5. Calculation of suite area is measured as the area bounded by the centre line of demising or partition walls separating one unit from another unit, the exterior face of all exterior walls, and the exterior face of the corridor wall enclosing the adjoining unit. 6. Calculation of balcony area is measured as the area bounded by the centre line of demising or partition walls separating one unit from another unit, the outmost face of the enclosing guard and the external face of the adjoining balcony. 7. The units are measured at typical floor in the building. Columns may vary in size depending on the floor level. 8. For each unit type, unit sizes and details might be slightly different. Please refer to the sales and purchase agreement for the actual size of each specific unit.

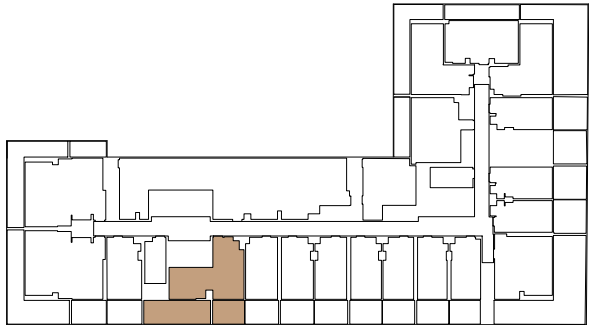
# 1 BEDROOMS

1 BEDROOMS  
TYPE 01



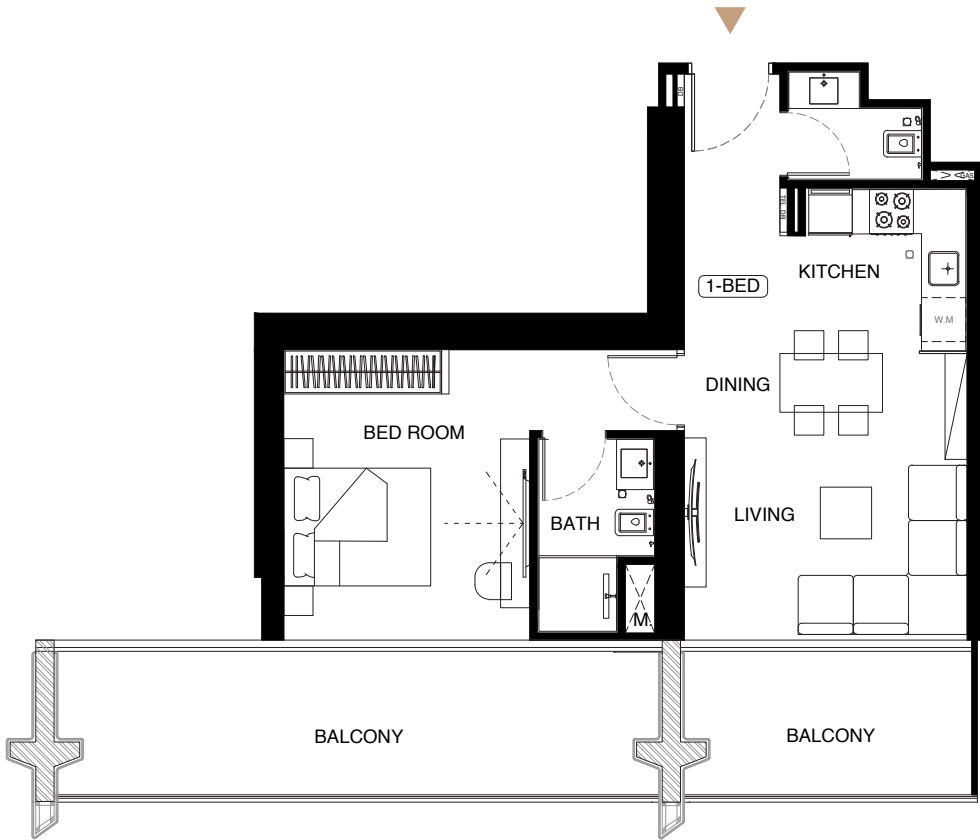
AREA	SQ.M	SQ. FT
SUITE AREA	54.20 m²	583.40 ft²
BALCONY AREA	38.13 m²	410.43 ft²
TOTAL UNIT AREA	92.33 m²	993.83 ft²

FLAT DESIGN COMPONENTS		
M.BATH		4 m²
M.BEDROOM		15 m²
LIVING & DINING		15 m²
KITCHEN		5 m²
CORRIDOR		5 m²
WC		2 m²



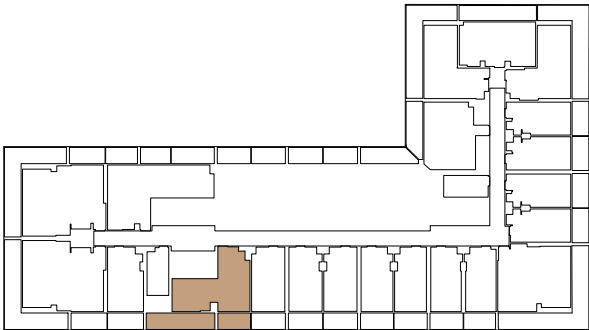
Disclaimer: 1. All room dimensions are measured to structural elements and exclude wall finishes and construction tolerances. 2. All dimensions have been provided by our consultant architects. 3. All materials, dimensions and drawings are approximate. Information is subject to change without notice. 4. Actual suite area may vary from the stated area. Drawings not to scale. The developer reserves the right to make revisions. 5. Calculation of suite area is measured as the area bounded by the centre line of demising or partition walls separating one unit from another unit, the exterior face of all exterior walls, and the exterior face of the corridor wall enclosing the adjoining unit. 6. Calculation of balcony area is measured as the area bounded by the centre line of demising or partition walls separating one unit from another unit, the outmost face of the enclosing guard and the external face of the adjoining balcony. 7. The units are measured at typical floor in the building. Columns may vary in size depending on the floor level. 8. For each unit type, unit sizes and details might be slightly different. Please refer to the sales and purchase agreement for the actual size of each specific unit.

1 BEDROOM  
TYPE 02



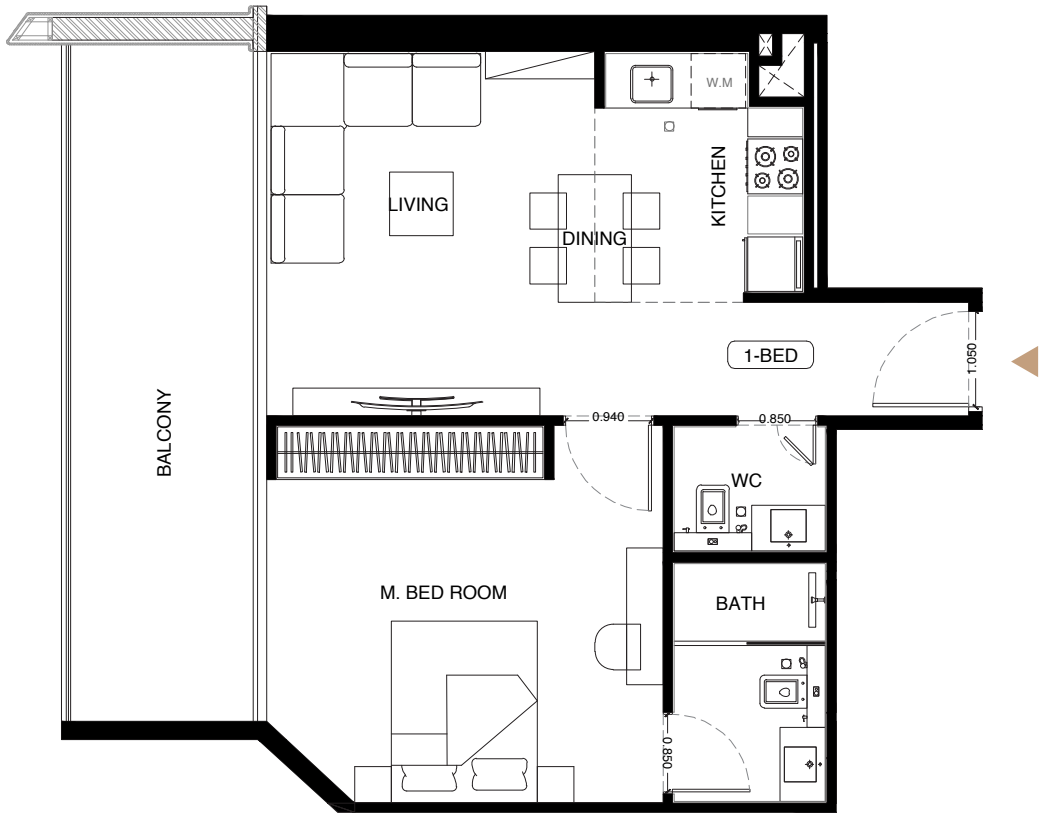
AREA	SQ.M.	SQ.FT.
SUITE AREA	54.19 m²	583.30 ft²
BALCONY AREA	25.54 m²	274.91 ft²
TOTAL UNIT AREA	79.73 m²	858.21 ft²

FLAT DESIGN COMPONENTS		
M.BATH		4 m²
M.BEDROOM		15 m²
LIVING & DINING		15 m²
KITCHEN		5 m²
CORRIDOR		5 m²
WC		2 m²



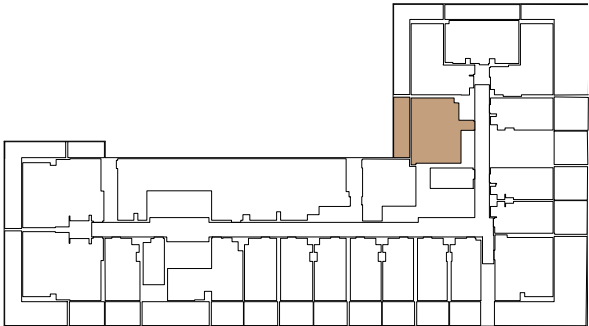
Disclaimer: 1. All room dimensions are measured to structural elements and exclude wall finishes and construction tolerances. 2. All dimensions have been provided by our consultant architects. 3. All materials, dimensions and drawings are approximate. Information is subject to change without notice. 4. Actual suite area may vary from the stated area. Drawings not to scale. The developer reserves the right to make revisions. 5. Calculation of suite area is measured as the area bounded by the centre line of demising or partition walls separating one unit from another unit, the exterior face of all exterior walls, and the exterior face of the corridor wall enclosing the adjoining unit. 6. Calculation of balcony area is measured as the area bounded by the centre line of demising or partition walls separating one unit from another unit, the outmost face of the enclosing guard and the external face of the adjoining balcony. 7. The units are measured at typical floor in the building. Columns may vary in size depending on the floor level. 8. For each unit type, unit sizes and details might be slightly different. Please refer to the sales and purchase agreement for the actual size of each specific unit.

1 BEDROOM TYPE 03



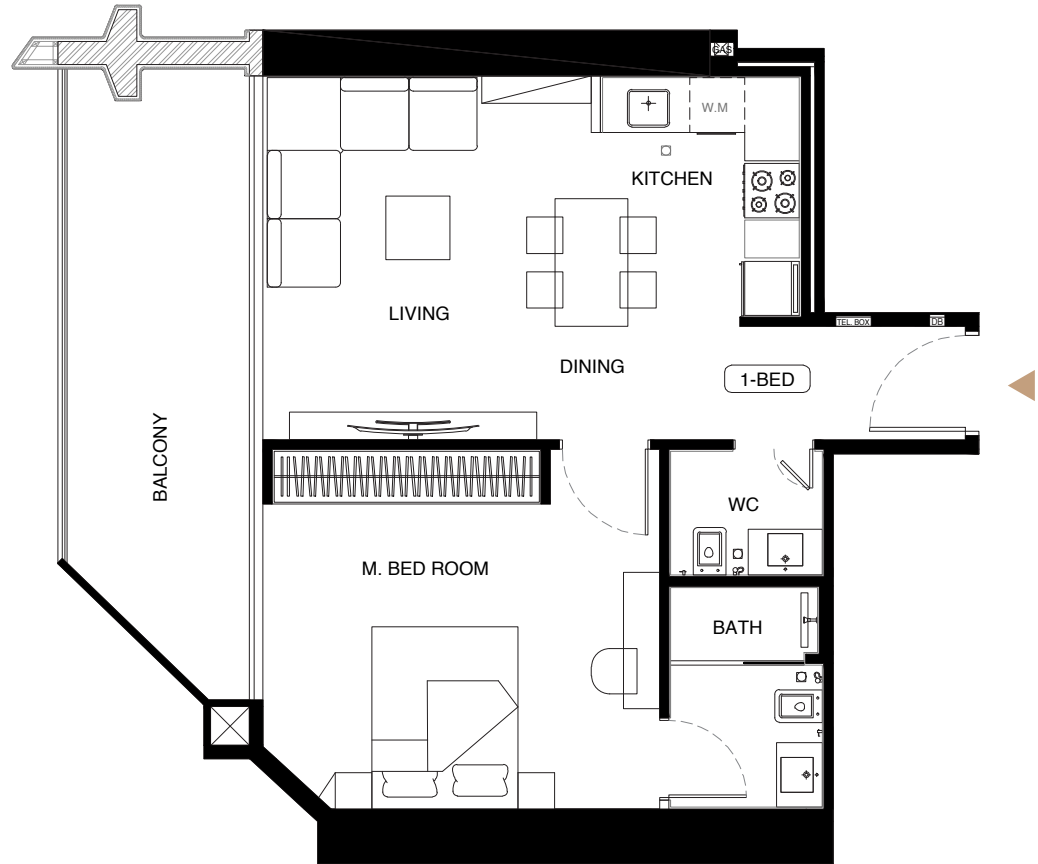
AREA	SQ.M.	SQ.FT.
SUITE AREA	55.35 m <sup>2</sup>	595.78 ft <sup>2</sup>
BALCONY AREA	15.70 m <sup>2</sup>	168.99 ft <sup>2</sup>
TOTAL UNIT AREA	71.05 m <sup>2</sup>	764.78 ft <sup>2</sup>

FLAT DESIGN COMPONENTS	
M.BATH	5 m <sup>2</sup>
M.BEDROOM	18 m <sup>2</sup>
LIVING & DINING	14 m <sup>2</sup>
KITCHEN	6 m <sup>2</sup>
CORRIDOR	5 m <sup>2</sup>
WC	2 m <sup>2</sup>



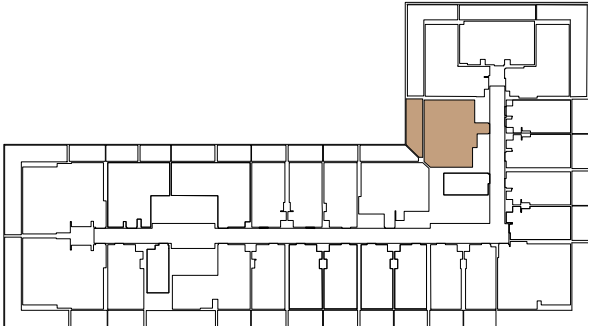
Disclaimer: 1. All room dimensions are measured to structural elements and exclude wall finishes and construction tolerances. 2. All dimensions have been provided by our consultant architects. 3. All materials, dimensions and drawings are approximate. Information is subject to change without notice. 4. Actual suite area may vary from the stated area. Drawings not to scale. The developer reserves the right to make revisions. 5. Calculation of suite area is measured as the area bounded by the centre line of demising or partition walls separating one unit from another unit, the exterior face of all exterior walls, and the exterior face of the corridor wall enclosing the adjoining unit. 6. Calculation of balcony area is measured as the area bounded by the centre line of demising or partition walls separating one unit from another unit, the outmost face of the enclosing guard and the external face of the adjoining balcony. 7. The units are measured at typical floor in the building. Columns may vary in size depending on the floor level. 8. For each unit type, unit sizes and details might be slightly different. Please refer to the sales and purchase agreement for the actual size of each specific unit.

1 BEDROOM TYPE 04



AREA	SQ.M.	SQ.FT.
SUITE AREA	55.31 m <sup>2</sup>	595.35 ft <sup>2</sup>
BALCONY AREA	13.37 m <sup>2</sup>	143.91 ft <sup>2</sup>
TOTAL UNIT AREA	68.68 m <sup>2</sup>	739.27 ft <sup>2</sup>

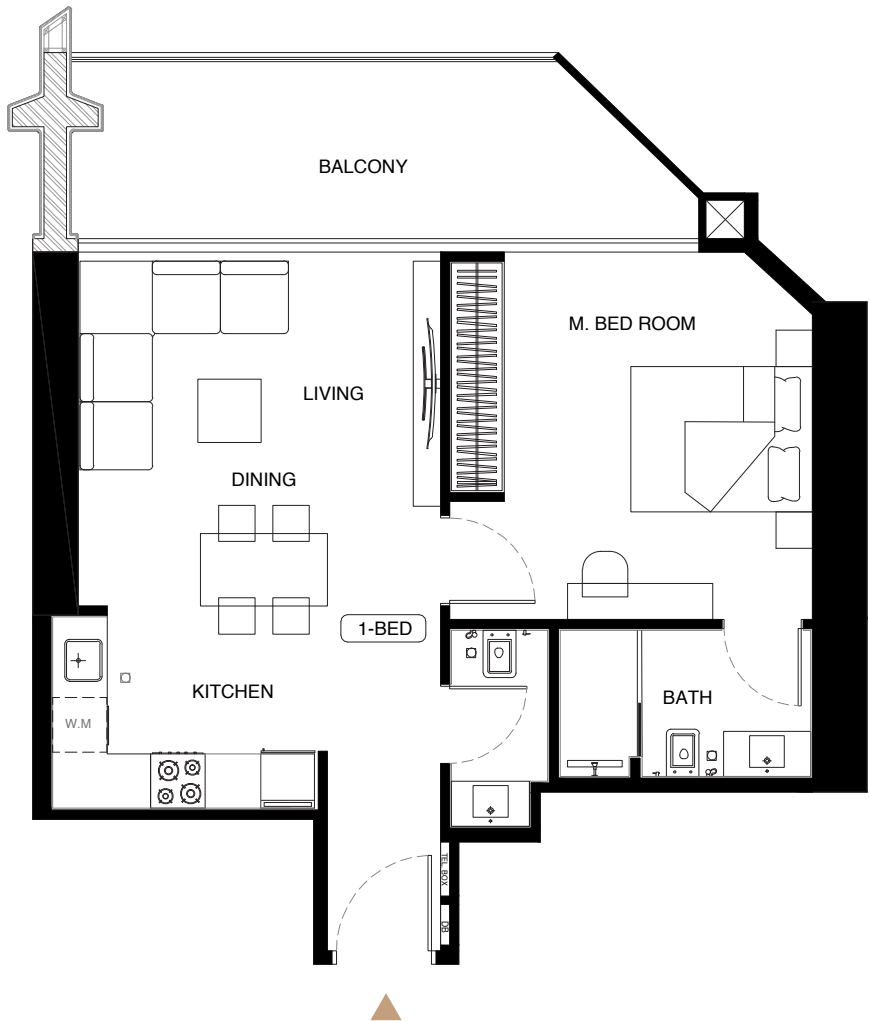
FLAT DESIGN COMPONENTS	
M.BATH	4 m <sup>2</sup>
M.BEDROOM	17 m <sup>2</sup>
LIVING & DINING	16 m <sup>2</sup>
KITCHEN	5 m <sup>2</sup>
CORRIDOR	4 m <sup>2</sup>
WC	2 m <sup>2</sup>



Disclaimer: 1. All room dimensions are measured to structural elements and exclude wall finishes and construction tolerances. 2. All dimensions have been provided by our consultant architects. 3. All materials, dimensions and drawings are approximate. Information is subject to change without notice. 4. Actual suite area may vary from the stated area. Drawings not to scale. The developer reserves the right to make revisions. 5. Calculation of suite area is measured as the area bounded by the centre line of demising or partition walls separating one unit from another unit, the exterior face of all exterior walls, and the exterior face of the corridor wall enclosing the adjoining unit. 6. Calculation of balcony area is measured as the area bounded by the centre line of demising or partition walls separating one unit from another unit, the outmost face of the enclosing guard and the external face of the adjoining balcony. 7. The units are measured at typical floor in the building. Columns may vary in size depending on the floor level. 8. For each unit type, unit sizes and details might be slightly different. Please refer to the sales and purchase agreement for the actual size of each specific unit.

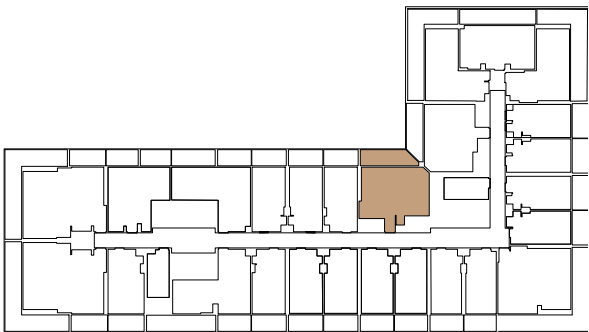
1 BEDROOM

TYPE 05



AREA	SQ.M.		SQ.FT.	
SUITE AREA	56.68	m²	610.10	ft²
BALCONY AREA	13.30	m²	143.16	ft²
TOTAL UNIT AREA	69.98	m²	753.26	ft²

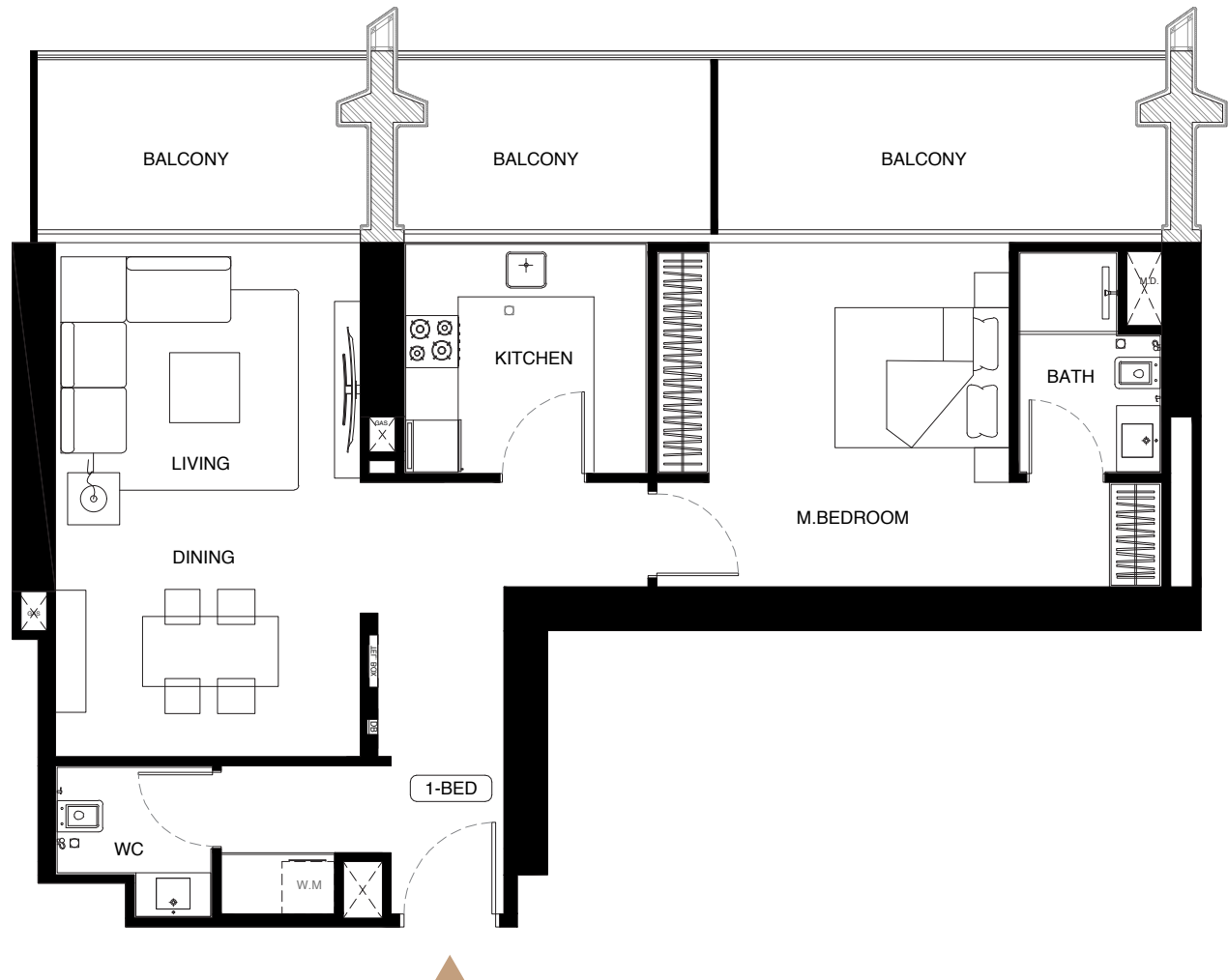
FLAT DESIGN COMPONENTS		
M.BATH	5	m²
M.BEDROOM	16	m²
LIVING & DINING	17	m²
KITCHEN	6	m²
CORRIDOR	4	m²
WC	2	m²



Disclaimer: 1. All room dimensions are measured to structural elements and exclude wall finishes and construction tolerances. 2. All dimensions have been provided by our consultant architects. 3. All materials, dimensions and drawings are approximate. Information is subject to change without notice. 4. Actual suite area may vary from the stated area. Drawings not to scale. The developer reserves the right to make revisions. 5. Calculation of suite area is measured as the area bounded by the centre line of demising or partition walls separating one unit from another unit, the exterior face of all exterior walls, and the exterior face of the corridor wall enclosing the adjoining unit. 6. Calculation of balcony area is measured as the area bounded by the centre line of demising or partition walls separating one unit from another unit, the outmost face of the enclosing guard and the external face of the adjoining balcony. 7. The units are measured at typical floor in the building. Columns may vary in size depending on the floor level. 8. For each unit type, unit sizes and details might be slightly different. Please refer to the sales and purchase agreement for the actual size of each specific unit.

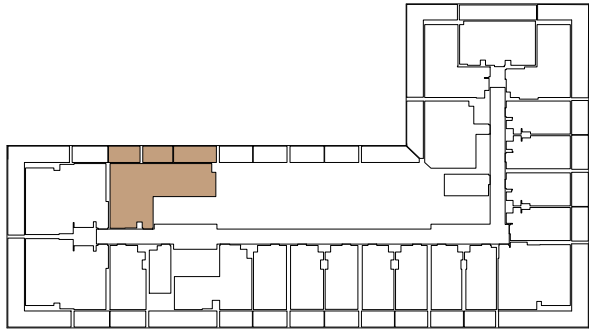
1 BEDROOM

TYPE 06



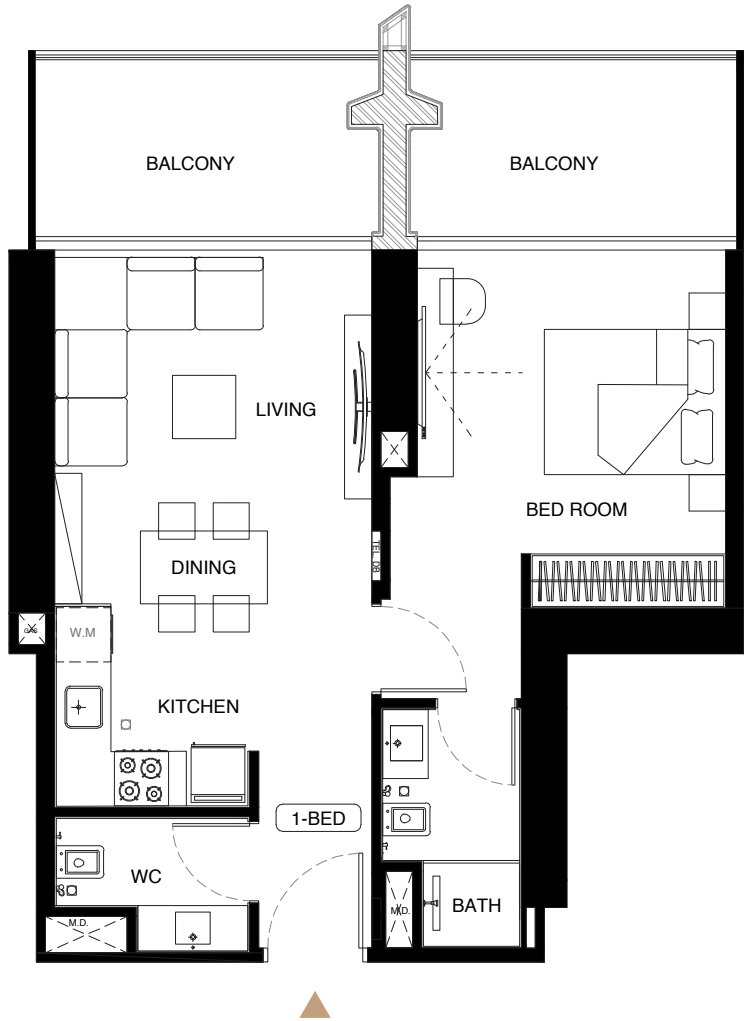
AREA	SQ.M.		SQ.FT.	
SUITE AREA	74.76	m²	804.71	ft²
BALCONY AREA	26.55	m²	285.78	ft²
TOTAL UNIT AREA	101.31	m²	1090.49	ft²

FLAT DESIGN COMPONENTS		
M.BATH	4	m²
M.BEDROOM	18	m²
LIVING & DINING	20	m²
KITCHEN	8	m²
CORRIDOR	11	m²
WC	3	m²
LAUNDRY	1	m²



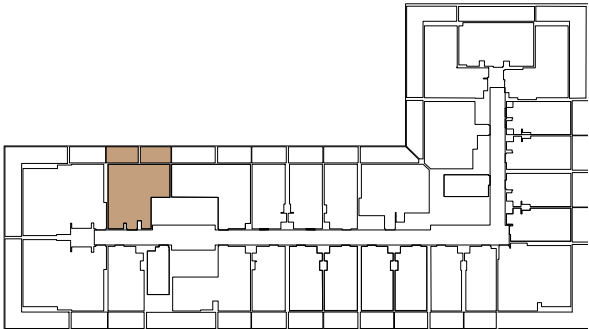
Disclaimer: 1. All room dimensions are measured to structural elements and exclude wall finishes and construction tolerances. 2. All dimensions have been provided by our consultant architects. 3. All materials, dimensions and drawings are approximate. Information is subject to change without notice. 4. Actual suite area may vary from the stated area. Drawings not to scale. The developer reserves the right to make revisions. 5. Calculation of suite area is measured as the area bounded by the centre line of demising or partition walls separating one unit from another unit, the exterior face of all exterior walls, and the exterior face of the corridor wall enclosing the adjoining unit. 6. Calculation of balcony area is measured as the area bounded by the centre line of demising or partition walls separating one unit from another unit, the outmost face of the enclosing guard and the external face of the adjoining balcony. 7. The units are measured at typical floor in the building. Columns may vary in size depending on the floor level. 8. For each unit type, unit sizes and details might be slightly different. Please refer to the sales and purchase agreement for the actual size of each specific unit.

1 BEDROOM TYPE 07



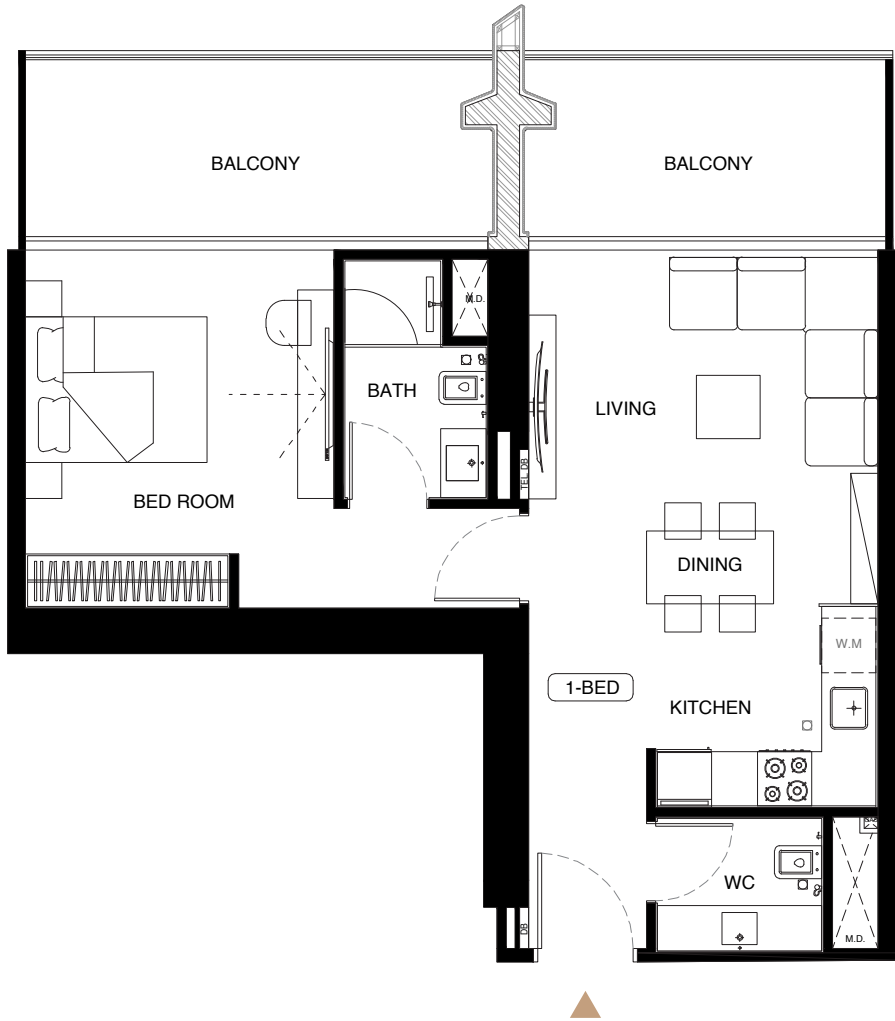
AREA	SQ.M.	SQ.FT.
SUITE AREA	52.22 m²	562.09 ft²
BALCONY AREA	15.65 m²	168.46 ft²
TOTAL UNIT AREA	67.87 m²	730.55 ft²

FLAT DESIGN COMPONENTS	
M.BATH	4 m²
M.BEDROOM	15 m²
LIVING & DINING	14 m²
KITCHEN	5 m²
CORRIDOR	5 m²
WC	3 m²



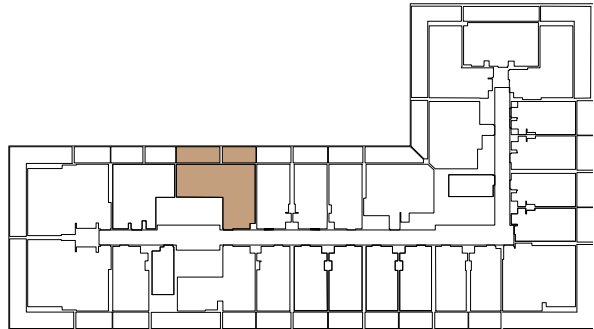
Disclaimer: 1. All room dimensions are measured to structural elements and exclude wall finishes and construction tolerances. 2. All dimensions have been provided by our consultant architects. 3. All materials, dimensions and drawings are approximate. Information is subject to change without notice. 4. Actual suite area may vary from the stated area. Drawings not to scale. The developer reserves the right to make revisions. 5. Calculation of suite area is measured as the area bounded by the centre line of demising or partition walls separating one unit from another unit, the exterior face of all exterior walls, and the exterior face of the corridor wall enclosing the adjoining unit. 6. Calculation of balcony area is measured as the area bounded by the centre line of demising or partition walls separating one unit from another unit, the outmost face of the enclosing guard and the external face of the adjoining balcony. 7. The units are measured at typical floor in the building. Columns may vary in size depending on the floor level. 8. For each unit type, unit sizes and details might be slightly different. Please refer to the sales and purchase agreement for the actual size of each specific unit.

1 BEDROOM TYPE 08



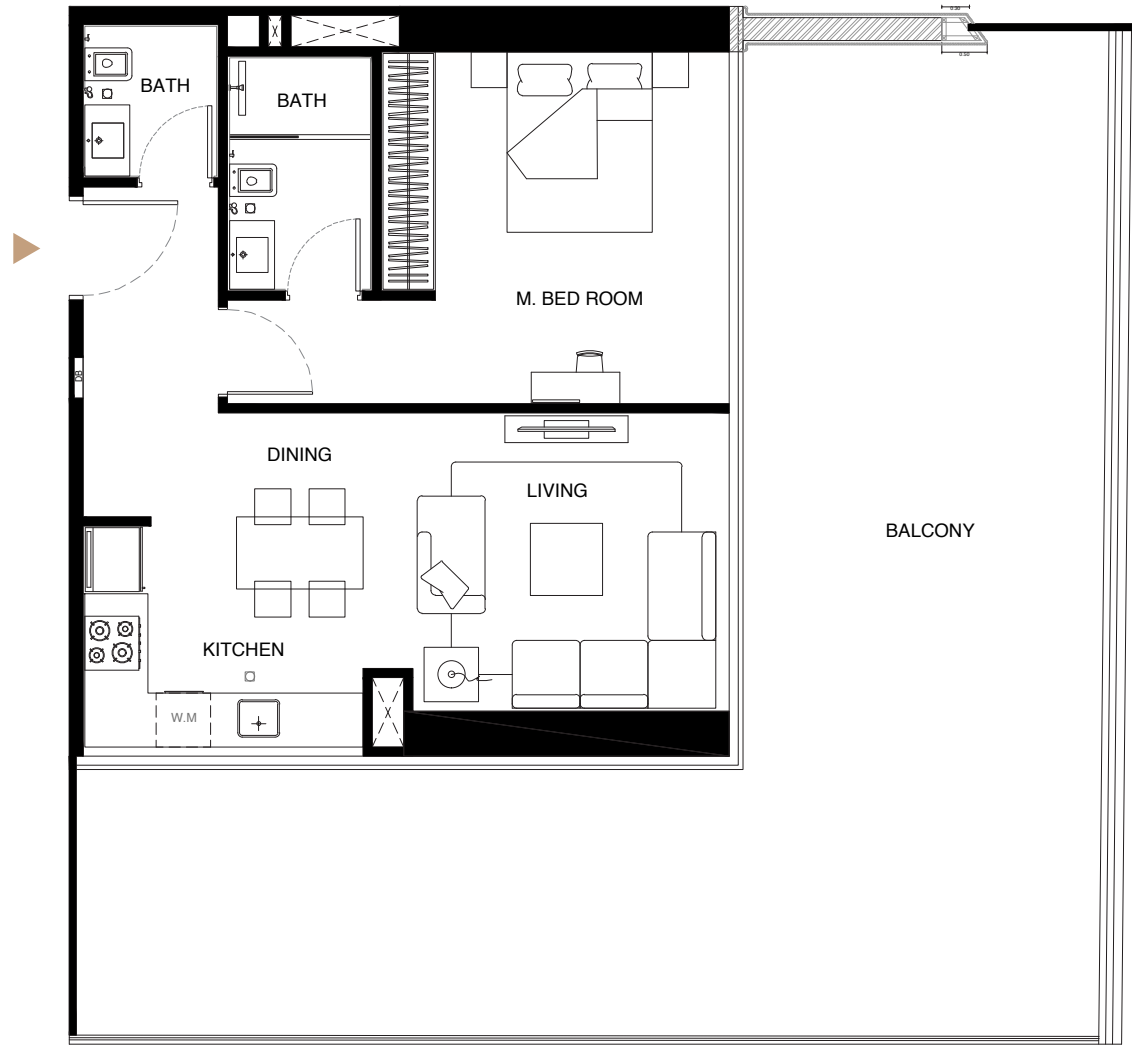
AREA	SQ.M.	SQ.FT.
SUITE AREA	55.06 m²	592.66 ft²
BALCONY AREA	19.41 m²	208.93 ft²
TOTAL UNIT AREA	74.47 m²	801.59 ft²

FLAT DESIGN COMPONENTS	
M.BATH	4 m²
M.BEDROOM	16 m²
LIVING & DINING	15 m²
KITCHEN	6 m²
CORRIDOR	5 m²
WC	3 m²



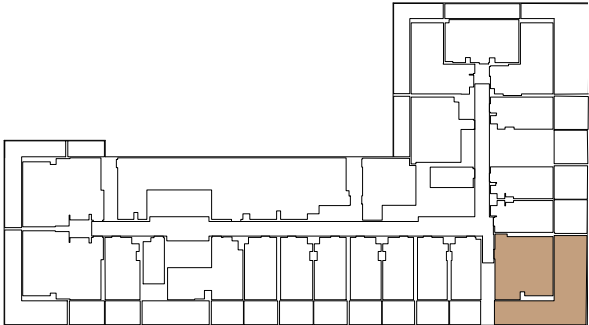
Disclaimer: 1. All room dimensions are measured to structural elements and exclude wall finishes and construction tolerances. 2. All dimensions have been provided by our consultant architects. 3. All materials, dimensions and drawings are approximate. Information is subject to change without notice. 4. Actual suite area may vary from the stated area. Drawings not to scale. The developer reserves the right to make revisions. 5. Calculation of suite area is measured as the area bounded by the centre line of demising or partition walls separating one unit from another unit, the exterior face of all exterior walls, and the exterior face of the corridor wall enclosing the adjoining unit. 6. Calculation of balcony area is measured as the area bounded by the centre line of demising or partition walls separating one unit from another unit, the outmost face of the enclosing guard and the external face of the adjoining balcony. 7. The units are measured at typical floor in the building. Columns may vary in size depending on the floor level. 8. For each unit type, unit sizes and details might be slightly different. Please refer to the sales and purchase agreement for the actual size of each specific unit.

1 BEDROOM TYPE 09



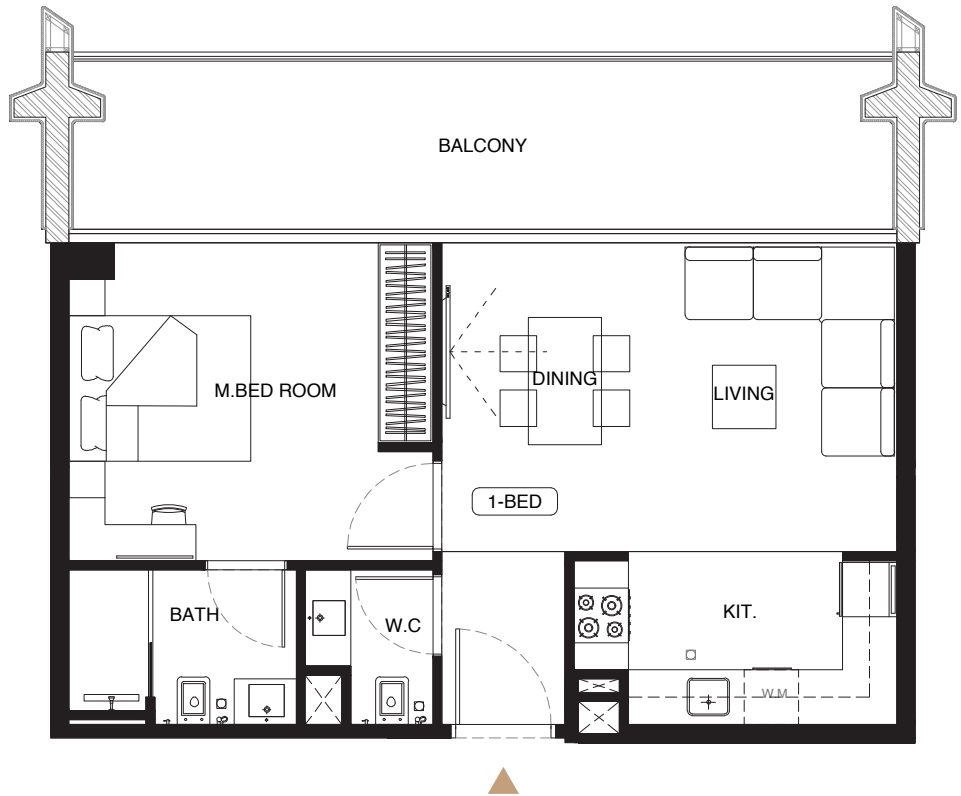
AREA	SQ.M.		SQ.FT.	
SUITE AREA	58.03	m <sup>2</sup>	624.63	ft <sup>2</sup>
BALCONY AREA	69.20	m <sup>2</sup>	744.86	ft <sup>2</sup>
TOTAL UNIT AREA	127.23	m <sup>2</sup>	1369.49	ft <sup>2</sup>

FLAT DESIGN COMPONENTS	
M.BATH	4 m <sup>2</sup>
M.BEDROOM	17 m <sup>2</sup>
LIVING	13 m <sup>2</sup>
KITCHEN & DINING	8 m <sup>2</sup>
CORRIDOR	10 m <sup>2</sup>
BATH	3 m <sup>2</sup>



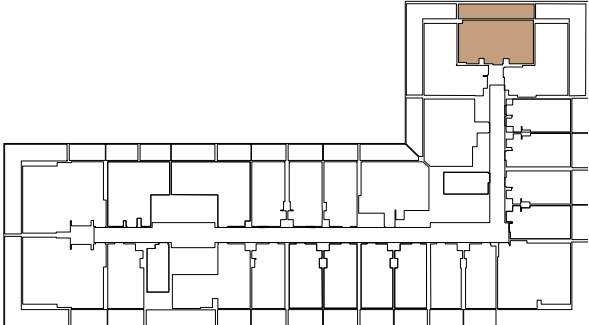
Disclaimer: 1. All room dimensions are measured to structural elements and exclude wall finishes and construction tolerances. 2. All dimensions have been provided by our consultant architects. 3. All materials, dimensions and drawings are approximate. Information is subject to change without notice. 4. Actual suite area may vary from the stated area. Drawings not to scale. The developer reserves the right to make revisions. 5. Calculation of suite area is measured as the area bounded by the centre line of demising or partition walls separating one unit from another unit, the exterior face of all exterior walls, and the exterior face of the corridor wall enclosing the adjoining unit. 6. Calculation of balcony area is measured as the area bounded by the centre line of demising or partition walls separating one unit from another unit, the outmost face of the enclosing guard and the external face of the adjoining balcony. 7. The units are measured at typical floor in the building. Columns may varyt in size depending on the floor level. 8. For each unit type, unit sizes and details might be slightly different. Please refer to the sales and purchase agreement for the actual size of each specific unit.

1 BEDROOM TYPE 10



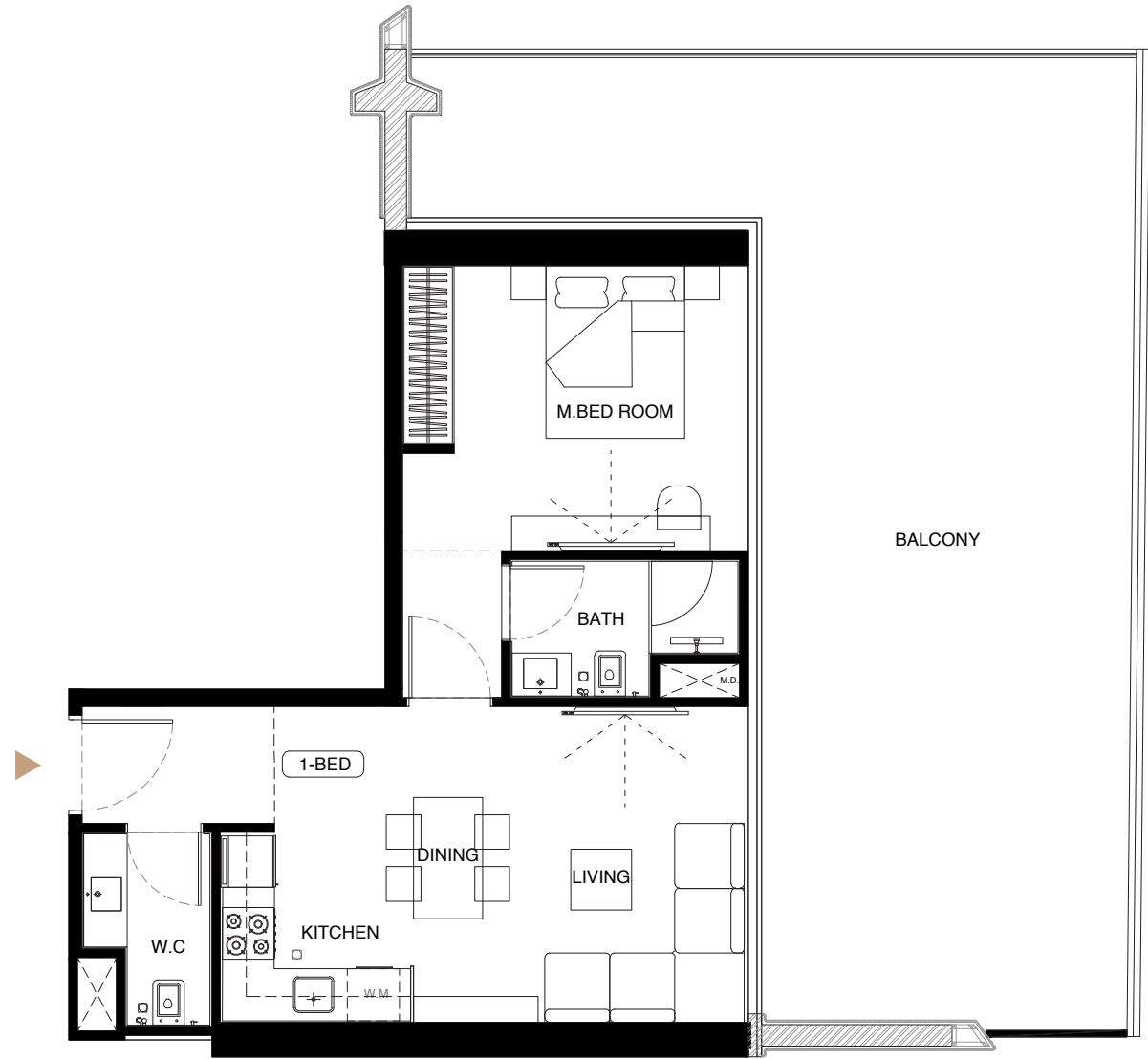
AREA	SQ.M.		SQ.FT.	
SUITE AREA	50.71	m <sup>2</sup>	545.84	ft <sup>2</sup>
BALCONY AREA	17.76	m <sup>2</sup>	191.17	ft <sup>2</sup>
TOTAL UNIT AREA	68.47	m <sup>2</sup>	737.00	ft <sup>2</sup>

FLAT DESIGN COMPONENTS	
M.BATH	4 m <sup>2</sup>
M.BEDROOM	14 m <sup>2</sup>
LIVING & DINING	17 m <sup>2</sup>
KITCHEN	6 m <sup>2</sup>
CORRIDOR	3 m <sup>2</sup>
WC	2 m <sup>2</sup>



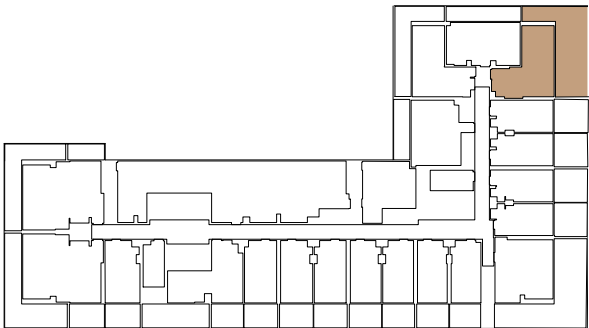
Disclaimer: 1. All room dimensions are measured to structural elements and exclude wall finishes and construction tolerances. 2. All dimensions have been provided by our consultant architects. 3. All materials, dimensions and drawings are approximate. Information is subject to change without notice. 4. Actual suite area may vary from the stated area. Drawings not to scale. The developer reserves the right to make revisions. 5. Calculation of suite area is measured as the area bounded by the centre line of demising or partition walls separating one unit from another unit, the exterior face of all exterior walls, and the exterior face of the corridor wall enclosing the adjoining unit. 6. Calculation of balcony area is measured as the area bounded by the centre line of demising or partition walls separating one unit from another unit, the outmost face of the enclosing guard and the external face of the adjoining balcony. 7. The units are measured at typical floor in the building. Columns may varyt in size depending on the floor level. 8. For each unit type, unit sizes and details might be slightly different. Please refer to the sales and purchase agreement for the actual size of each specific unit.

1 BEDROOM TYPE 11



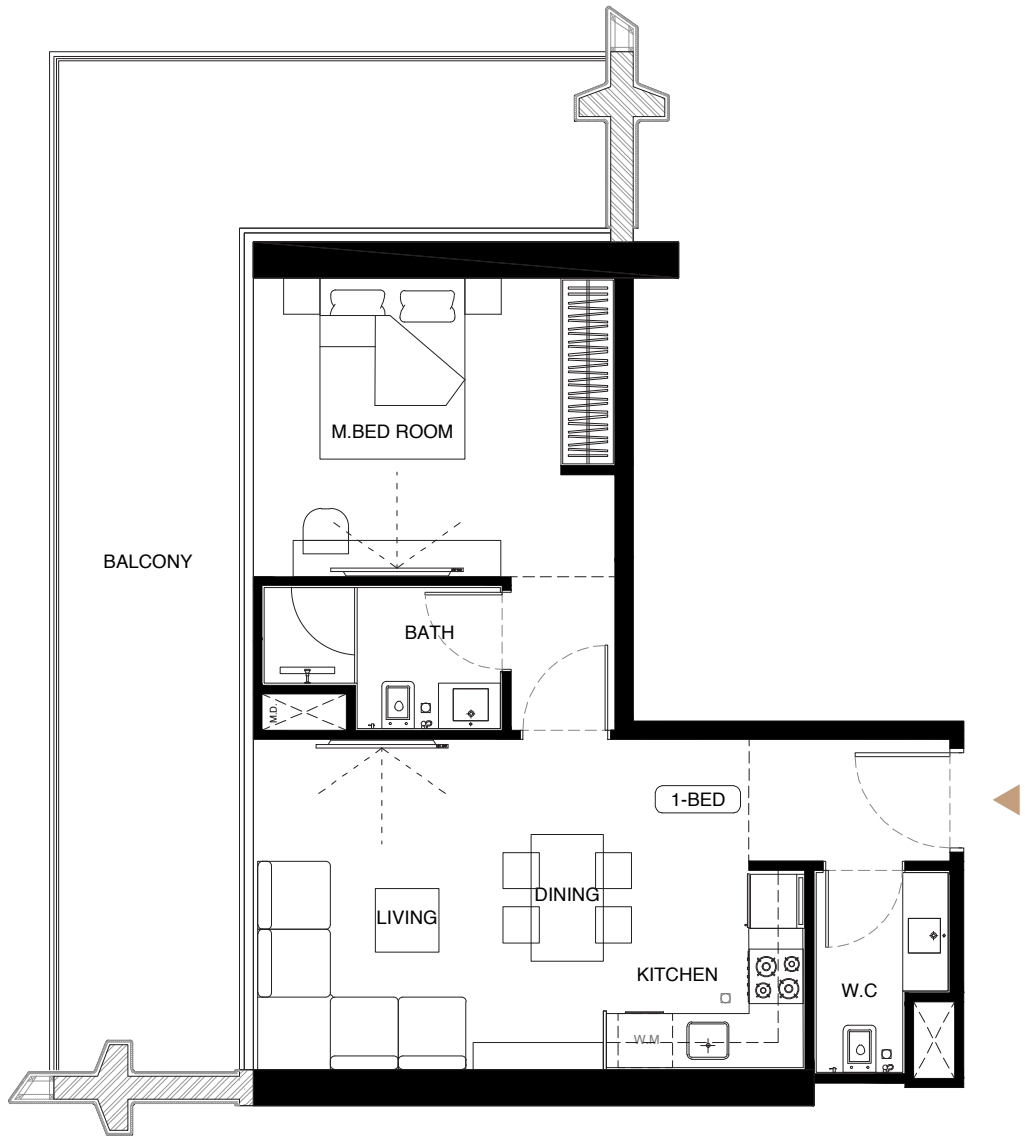
AREA	SQ.M.		SQ.FT.	
SUITE AREA	51.83	m²	557.89	ft²
BALCONY AREA	59.18	m²	637.01	ft²
TOTAL UNIT AREA	111.01	m²	1194.90	ft²

FLAT DESIGN COMPONENTS	
M.BATH	4 m²
M.BEDROOM	15 m²
LIVING & DINING	20 m²
KITCHEN	5 m²
CORRIDOR	5 m²
WC	3 m²



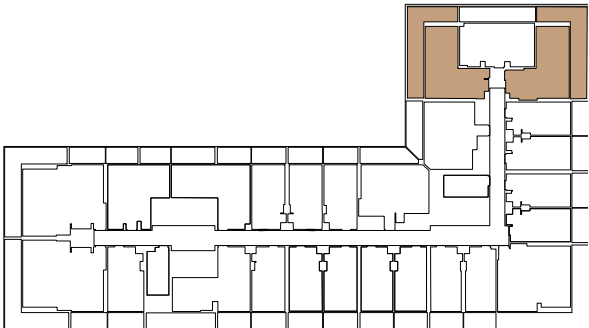
Disclaimer: 1. All room dimensions are measured to structural elements and exclude wall finishes and construction tolerances. 2. All dimensions have been provided by our consultant architects. 3. All materials, dimensions and drawings are approximate. Information is subject to change without notice. 4. Actual suite area may vary from the stated area. Drawings not to scale. The developer reserves the right to make revisions. 5. Calculation of suite area is measured as the area bounded by the centre line of demising or partition walls separating one unit from another unit, the exterior face of all exterior walls, and the exterior face of the corridor wall enclosing the adjoining unit. 6. Calculation of balcony area is measured as the area bounded by the centre line of demising or partition walls separating one unit from another unit, the outmost face of the enclosing guard and the external face of the adjoining balcony. 7. The units are measured at typical floor in the building. Columns may vary in size depending on the floor level. 8. For each unit type, unit sizes and details might be slightly different. Please refer to the sales and purchase agreement for the actual size of each specific unit.

1 BEDROOM TYPE 12



AREA	SQ.M.		SQ.FT.	
SUITE AREA	51.83	m²	557.89	ft²
BALCONY AREA	32.97	m²	354.89	ft²
TOTAL UNIT AREA	84.80	m²	912.78	ft²

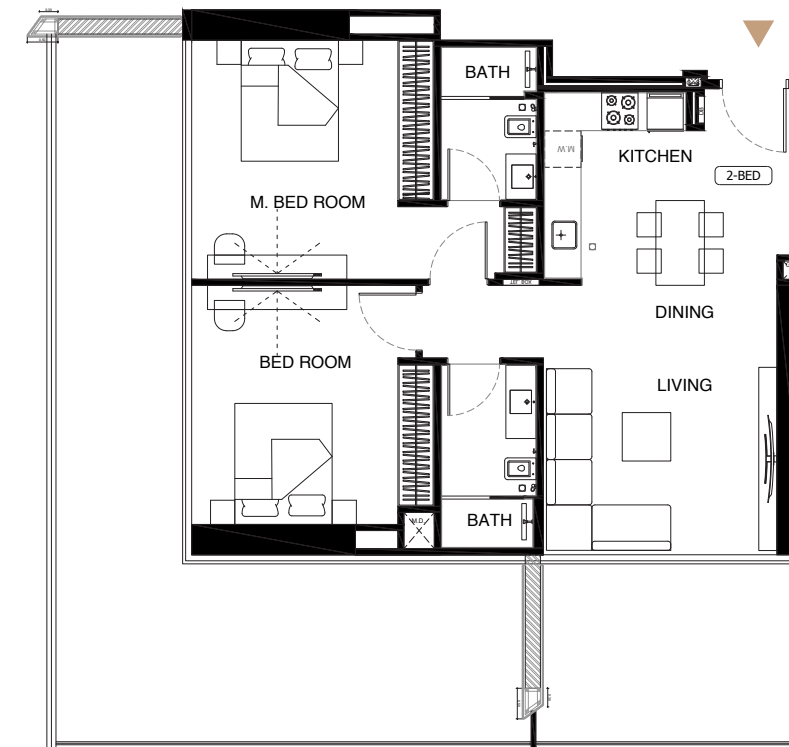
FLAT DESIGN COMPONENTS	
M.BATH	4 m²
M.BEDROOM	15 m²
LIVING & DINING	20 m²
KITCHEN	5 m²
CORRIDOR	5 m²
WC	3 m²



Disclaimer: 1. All room dimensions are measured to structural elements and exclude wall finishes and construction tolerances. 2. All dimensions have been provided by our consultant architects. 3. All materials, dimensions and drawings are approximate. Information is subject to change without notice. 4. Actual suite area may vary from the stated area. Drawings not to scale. The developer reserves the right to make revisions. 5. Calculation of suite area is measured as the area bounded by the centre line of demising or partition walls separating one unit from another unit, the exterior face of all exterior walls, and the exterior face of the corridor wall enclosing the adjoining unit. 6. Calculation of balcony area is measured as the area bounded by the centre line of demising or partition walls separating one unit from another unit, the outmost face of the enclosing guard and the external face of the adjoining balcony. 7. The units are measured at typical floor in the building. Columns may vary in size depending on the floor level. 8. For each unit type, unit sizes and details might be slightly different. Please refer to the sales and purchase agreement for the actual size of each specific unit.

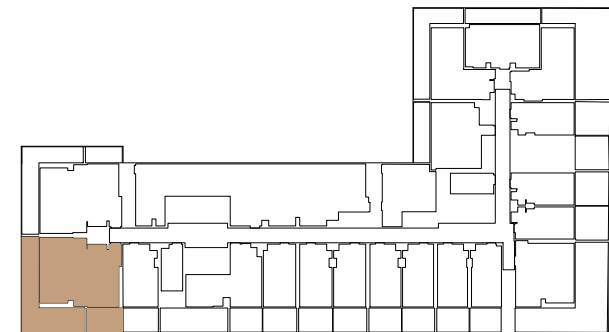
# 2 BEDROOMS

## 2 BEDROOMS TYPE 01



AREA	SQ.M	SQ.	FT
SUITE AREA	54.20 m²	583.40	ft²
BALCONY AREA	38.13 m²	410.43	ft²
TOTAL UNIT AREA	92.33 m²	993.83	ft²

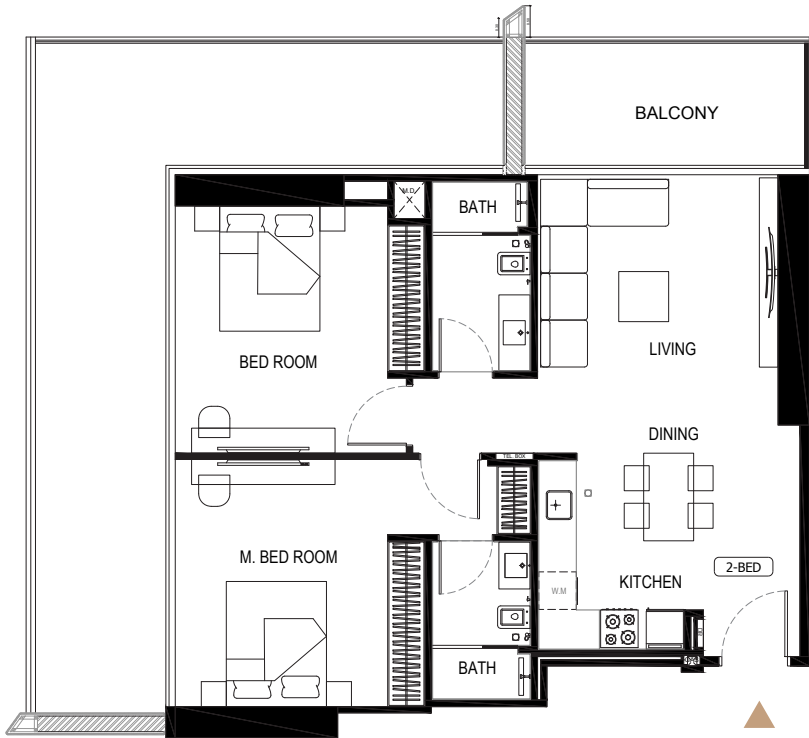
FLAT DESIGN COMPONENTS		
M.BATH		4 m²
M.BEDROOM		18 m²
LIVING		17 m²
KITCHEN & DINING		9 m²
CORRIDOR		6 m²
BATH		5 m²
BEDROOM		15 m²



Disclaimer: 1. All room dimensions are measured to structural elements and exclude wall finishes and construction tolerances. 2. All dimensions have been provided by our consultant architects. 3. All materials, dimensions and drawings are approximate. Information is subject to change without notice. 4. Actual suite area may vary from the stated area. Drawings not to scale. The developer reserves the right to make revisions. 5. Calculation of suite area is measured as the area bounded by the centre line of demising or partition walls separating one unit from another unit, the exterior face of all exterior walls, and the exterior face of the corridor wall enclosing the adjoining unit. 6. Calculation of balcony area is measured as the area bounded by the centre line of demising or partition walls separating one unit from another unit, the outmost face of the enclosing guard and the external face of the adjoining balcony. 7. The units are measured at typical floor in the building. Columns may vary in size depending on the floor level. 8. For each unit type, unit sizes and details might be slightly different. Please refer to the sales and purchase agreement for the actual size of each specific unit.

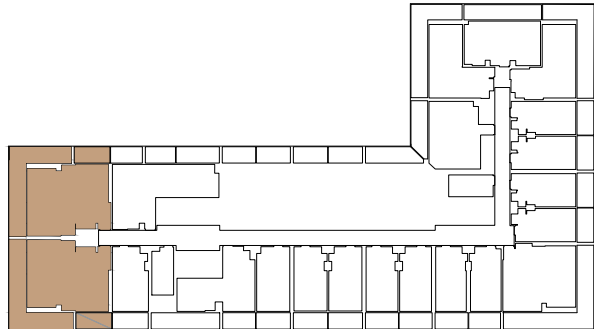
2 BEDROOMS

TYPE 02



AREA	SQ.M	SQ.	FT
SUITE AREA	83.12 m²	894.70	ft²
BALCONY AREA	44.32 m²	477.06	ft²
TOTAL UNIT AREA	127.44 m²	1371.75	ft²

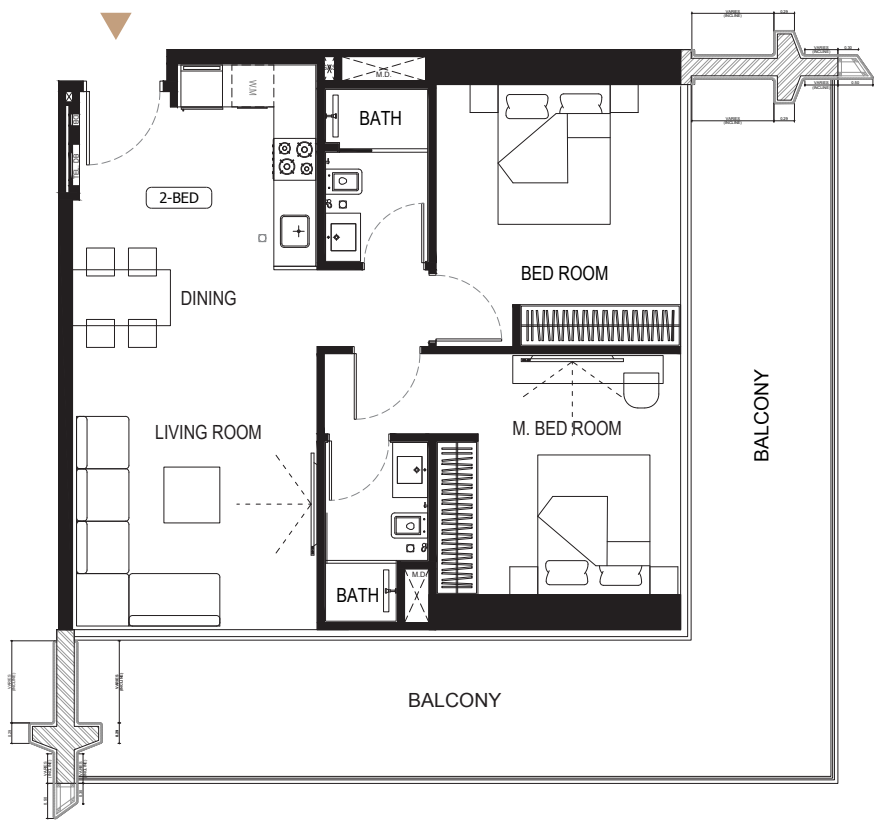
FLAT DESIGN COMPONENTS	
M.BATH	4 m²
M.BEDROOM	18 m²
LIVING	15 m²
KITCHEN & DINING	10 m²
CORRIDOR	7 m²
BATH	5 m²
BEDROOM	15 m²



Disclaimer: 1. All room dimensions are measured to structural elements and exclude wall finishes and construction tolerances. 2. All dimensions have been provided by our consultant architects. 3. All materials, dimensions and drawings are approximate. Information is subject to change without notice. 4. Actual suite area may vary from the stated area. Drawings not to scale. The developer reserves the right to make revisions. 5. Calculation of suite area is measured as the area bounded by the centre line of demising or partition walls separating one unit from another unit, the exterior face of all exterior walls, and the exterior face of the corridor wall enclosing the adjoining unit. 6. Calculation of balcony area is measured as the area bounded by the centre line of demising or partition walls separating one unit from another unit, the outmost face of the enclosing guard and the external face of the adjoining balcony. 7. The units are measured at typical floor in the building. Columns may varyt in size depending on the floor level. 8. For each unit type, unit sizes and details might be slightly different. Please refer to the sales and purchase agreement for the actual size of each specific unit.

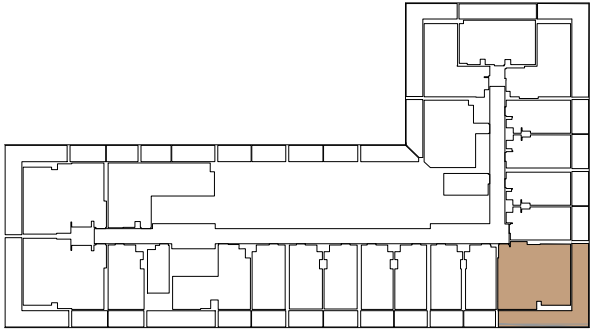
2 BEDROOMS

TYPE 03



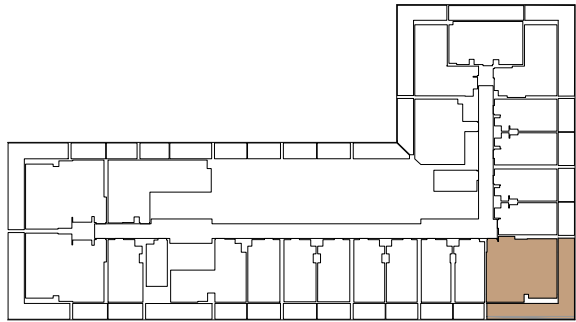
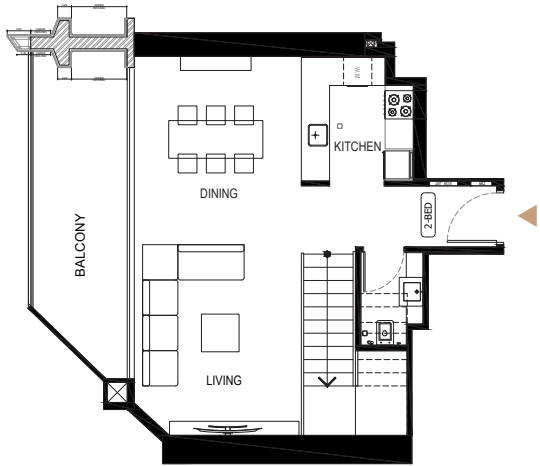
AREA	SQ.M	SQ.	FT
SUITE AREA	70.41 m²	757.89	ft²
BALCONY AREA	40.19 m²	432.60	ft²
TOTAL UNIT AREA	110.60 m²	1190.49	ft²

FLAT DESIGN COMPONENTS	
M.BATH	4 m²
M.BEDROOM	14 m²
LIVING	18 m²
KITCHEN & DINING	8 m²
CORRIDOR	6 m²
BATH	4 m²
BEDROOM	13 m²



Disclaimer: 1. All room dimensions are measured to structural elements and exclude wall finishes and construction tolerances. 2. All dimensions have been provided by our consultant architects. 3. All materials, dimensions and drawings are approximate. Information is subject to change without notice. 4. Actual suite area may vary from the stated area. Drawings not to scale. The developer reserves the right to make revisions. 5. Calculation of suite area is measured as the area bounded by the centre line of demising or partition walls separating one unit from another unit, the exterior face of all exterior walls, and the exterior face of the corridor wall enclosing the adjoining unit. 6. Calculation of balcony area is measured as the area bounded by the centre line of demising or partition walls separating one unit from another unit, the outmost face of the enclosing guard and the external face of the adjoining balcony. 7. The units are measured at typical floor in the building. Columns may varyt in size depending on the floor level. 8. For each unit type, unit sizes and details might be slightly different. Please refer to the sales and purchase agreement for the actual size of each specific unit.

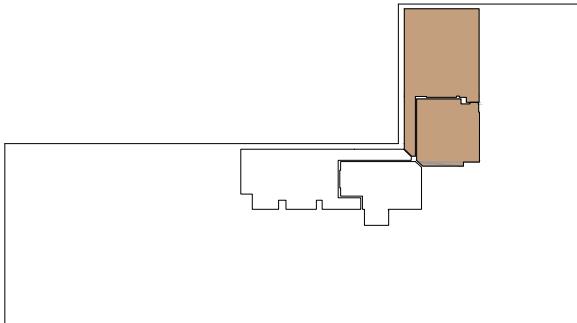
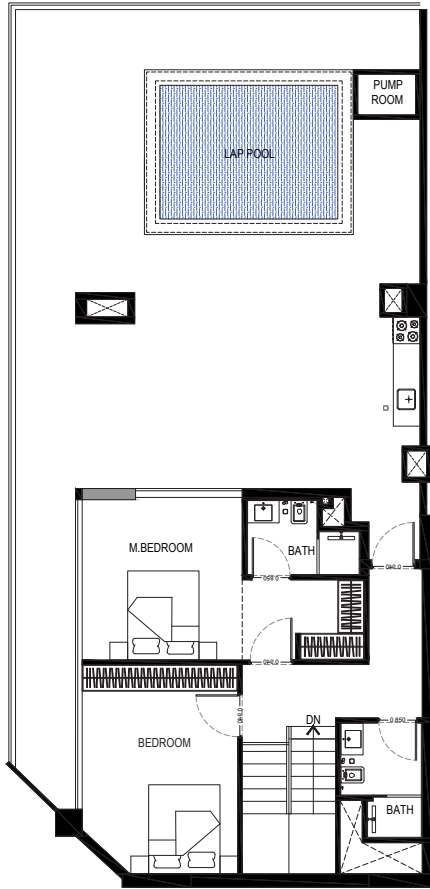
LEVEL 01



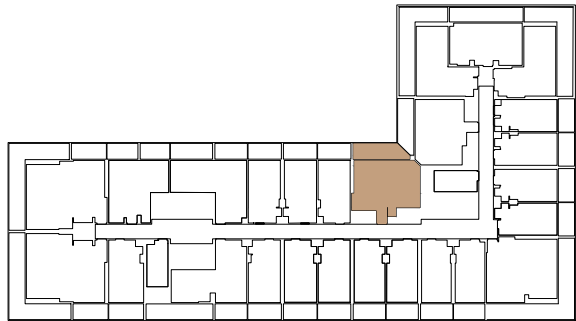
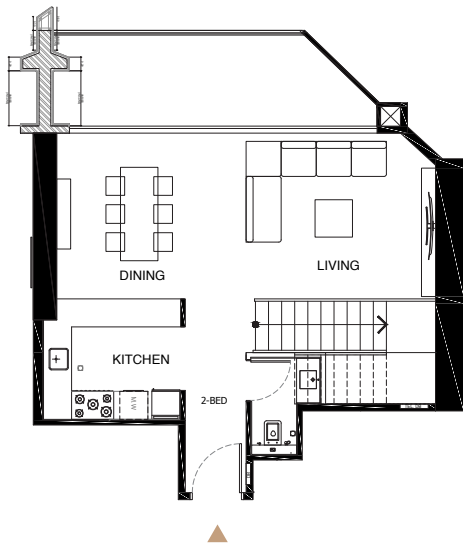
AREA	SQ.M	SQ. FT
SUITE AREA	117.03 m²	1259.70 ft²
BALCONY AREA	125.18 m²	1347.43 ft²
TOTAL UNIT AREA	110.60 m²	2607.13 ft²

FLAT DESIGN COMPONENTS		
M.BATH		4 m²
M.BEDROOM		14 m²
LIVING & DINING		28 m²
KITCHEN		8 m²
CORRIDOR + STAIRCASE		26 m²
BATH		4 m²
BEDROOM		16 m²
WC		3 m²

LEVEL 02



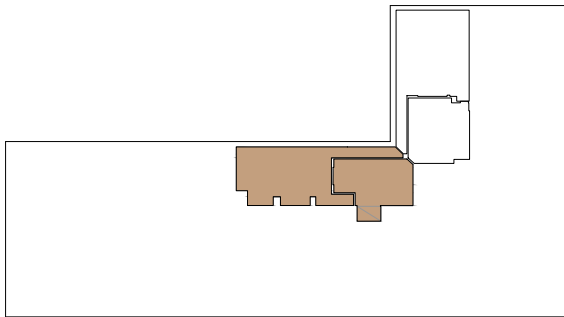
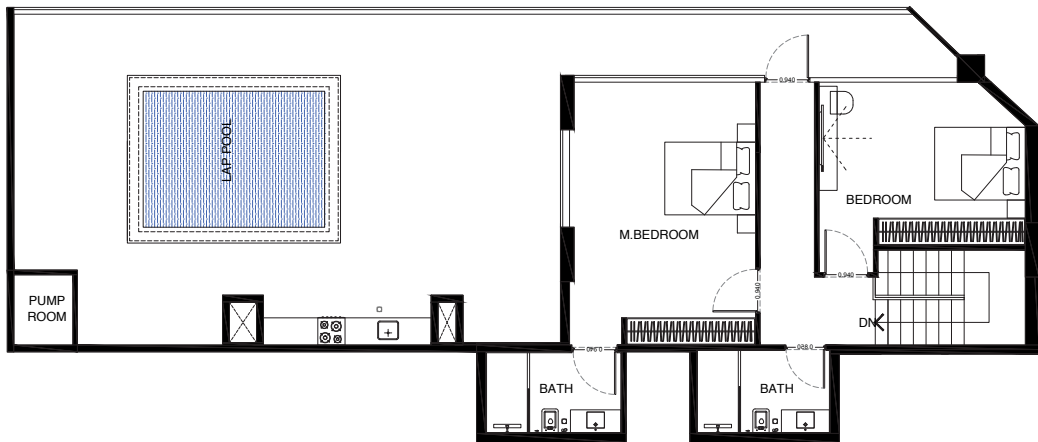
LEVEL 01



AREA	SQ.M	SQ.	FT
SUITE AREA	131.49 m²	1415.35	ft²
BALCONY AREA	113.31 m²	1219.66	ft²
TOTAL UNIT AREA	244.80 m²	2635.01	ft²

FLAT DESIGN COMPONENTS		
M.BATH		5 m²
M.BEDROOM		20 m²
LIVING & DINING		28 m²
KITCHEN		7 m²
CORRIDOR + STAIRCASE		29 m²
BATH		5 m²
BEDROOM		17 m²
WC		3 m²

LEVEL 02





# BINGHATTI STARLIGHT

FOR MORE INFORMATION PLEASE CONTACT



☎ +971 55 476 7630  
☎ +971 4 368 7878  
✉ info@afsrealestate.com  
🌐 www.afsrealestate.com



☎ +971 50 674 2020  
☎ +971 4 397 7731  
✉ info@dubricks.com  
🌐 www.dubricks.com

